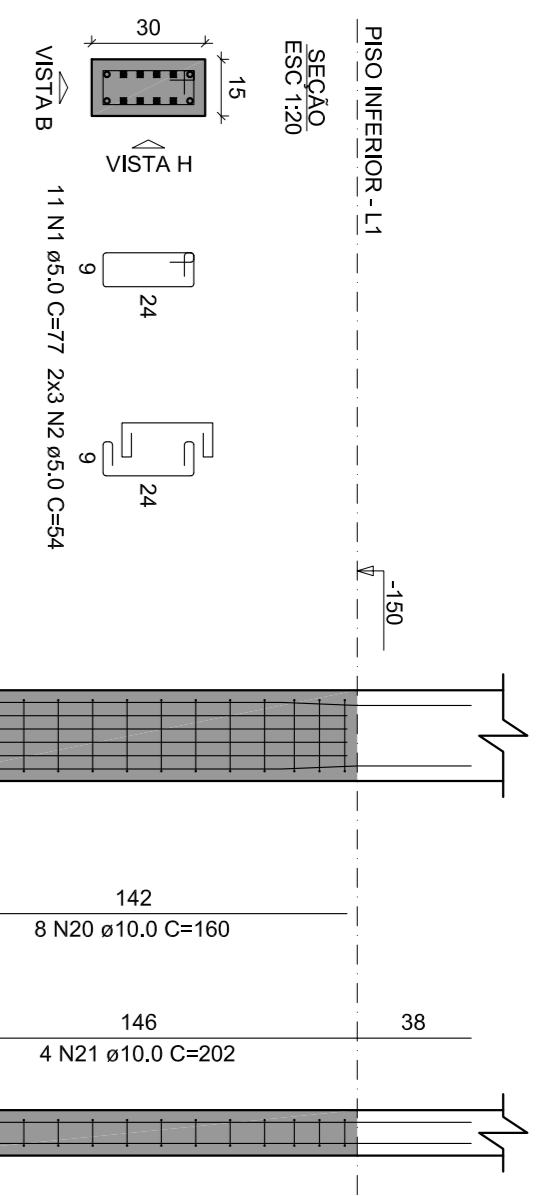
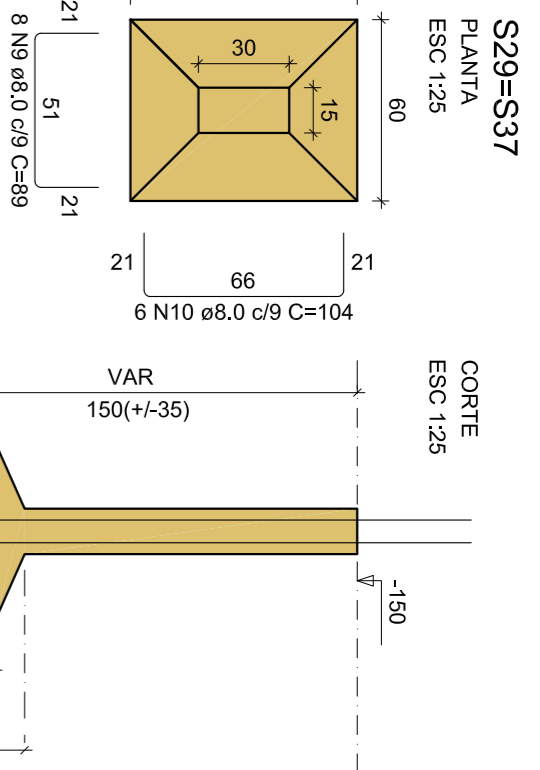
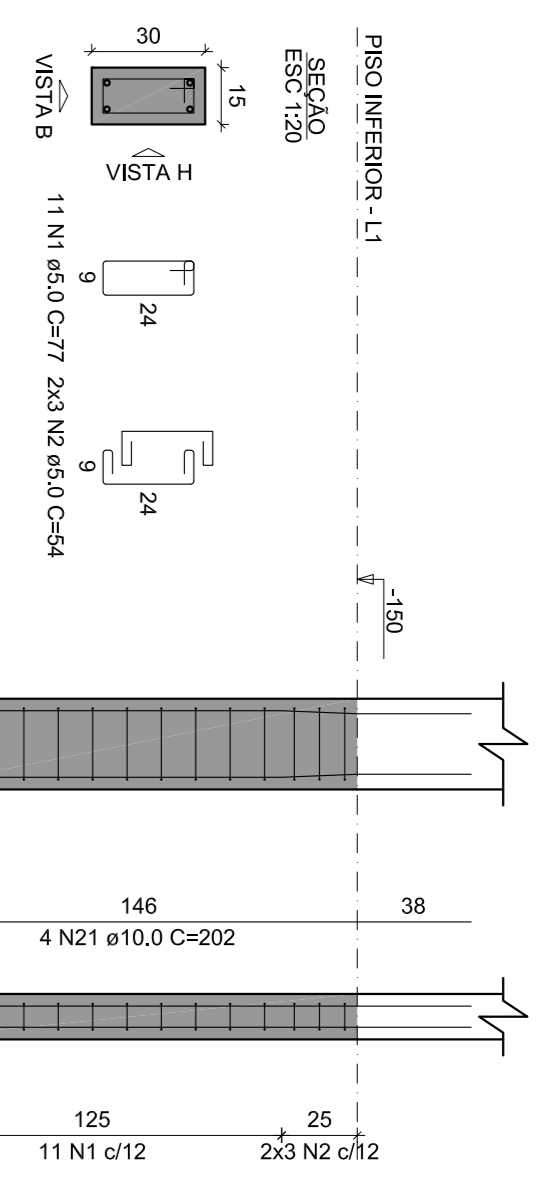


P29



P37



VISTA H
ESC: 1/25

VISTA B
ESC: 1/25

P31



VISTA H
ESC: 1/25

VISTA B
ESC: 1/25

RELAÇÃO DO AÇO

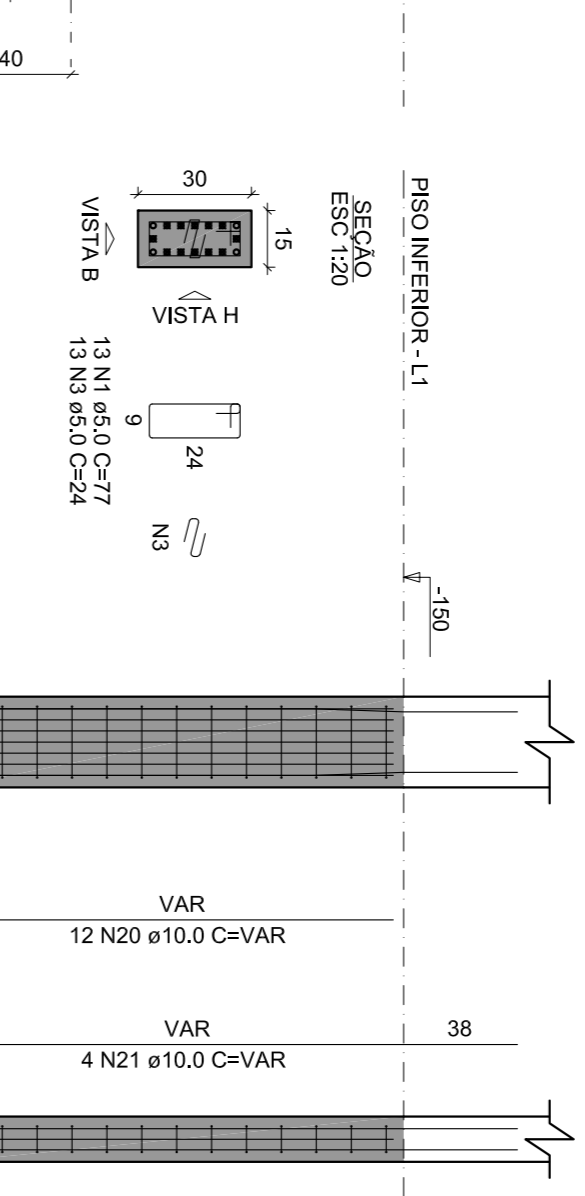
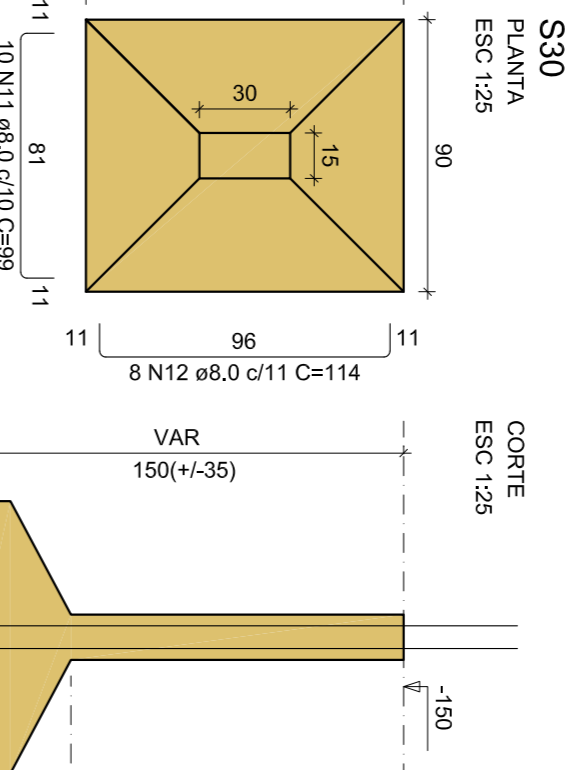
ACO	N	DIAM (mm)	QUANT	C,UNIT (cm)	C,TOTAL (cm)
CA60	1	5,0	71	7,7	546,7
CA60	3	5,0	62	7,7	481,4
CA60	4	5,0	10	2,4	24,0
CA60	5	5,0	10	2,4	24,0
CA60	7	5,0	1	0,8	6,3
CA60	8	5,0	1	0,8	6,3
CA60	9	5,0	6	4,8	28,8
CA60	10	5,0	16	12,0	192,0
CA60	11	5,0	10	7,6	76,0
CA60	12	8,0	11	11,6	127,6
CA60	14	8,0	12	10,4	124,8
CA60	15	8,0	9	9,9	89,1
CA60	17	8,0	8	9	72,0
CA60	18	8,0	16	16	128,0
CA60	20	10,0	54	16	864,0
CA60	21	10,0	54	16	864,0
CA60	22	10,0	24	20,2	484,8
CA60	23	12,5	10	4	40,0
CA60	25	12,5	10	4	40,0

RESUMO DO AÇO

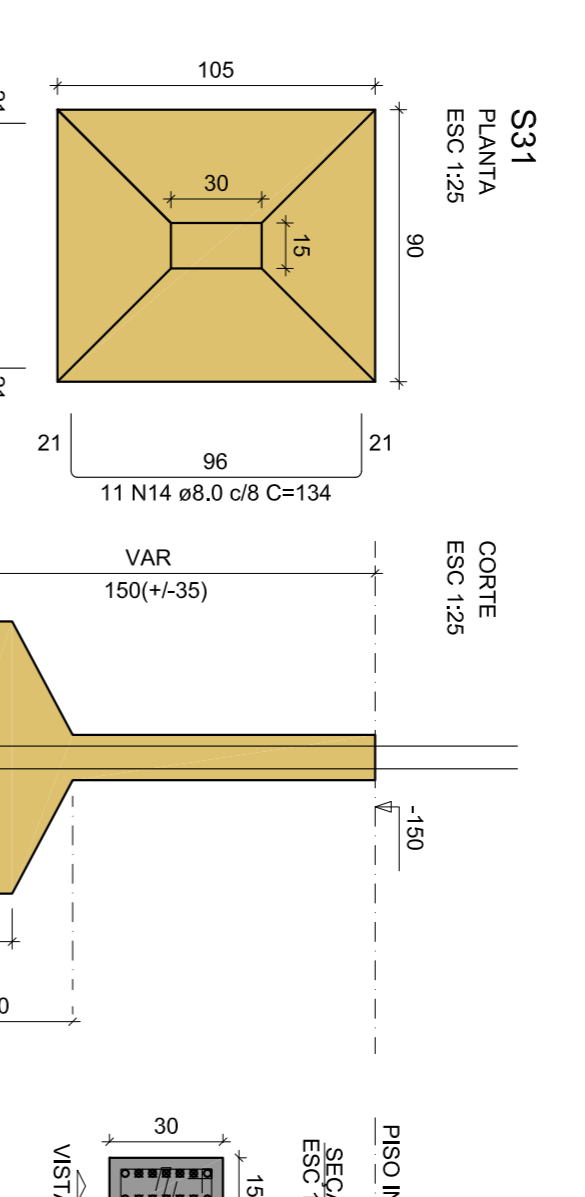
ACO	DIAM (mm)	C,TOTAL (cm)	PESO + 10% (kg)
CA40	8,0	48,1	64,3
CA60	10,0	136,1	93,6
CA60	12,5	24,3	25,2
CA60	10,0	10,3	17,3
PESO TOTAL (kg)			199,4
CA60	17,5		192,7
CA60	12,5		6,7

Volume de concreto (C=25) = 2,35 m³
Área da forma = 17,73 m²

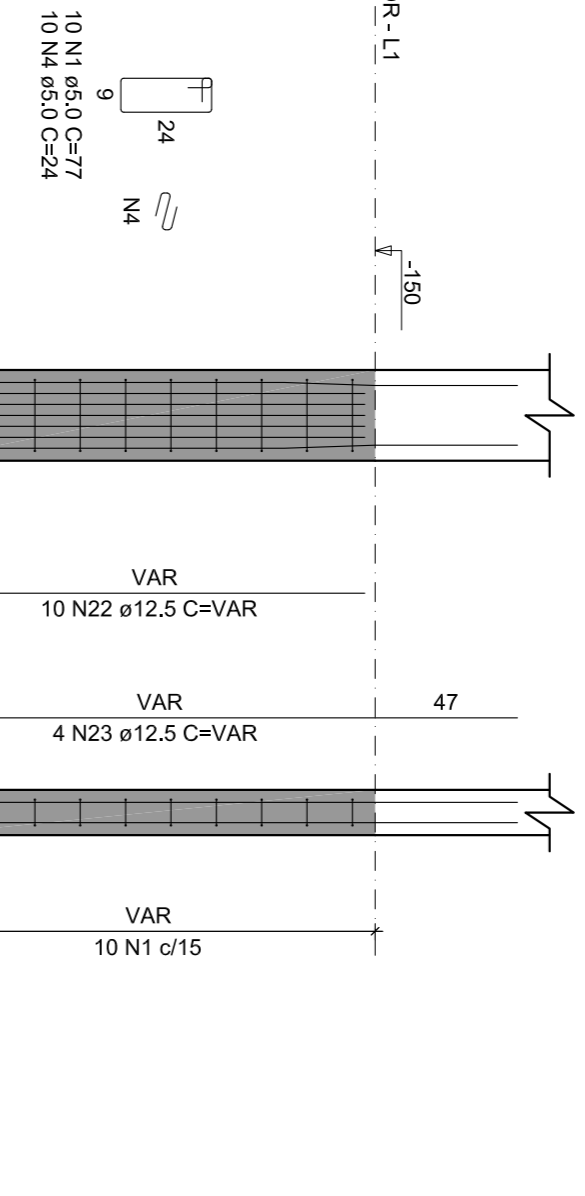
P30



P32



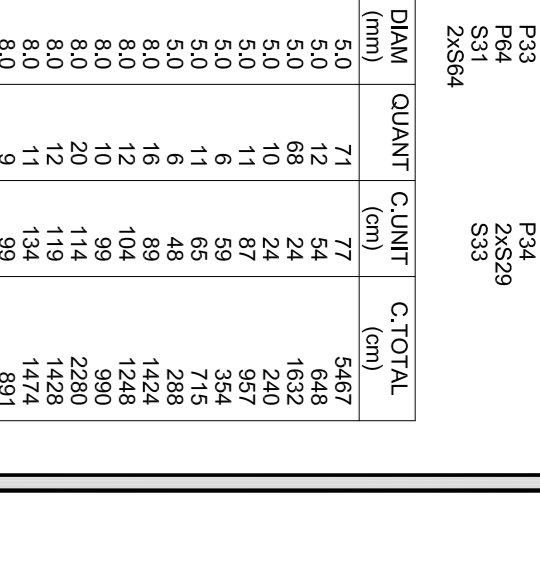
P33



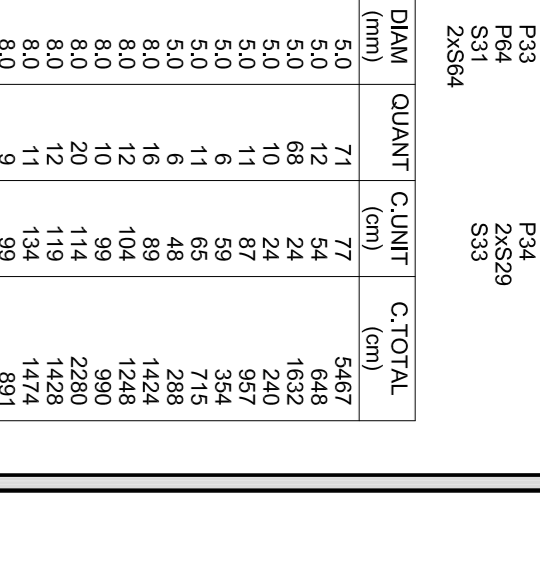
VISTA H
ESC: 1/25

VISTA B
ESC: 1/25

P34

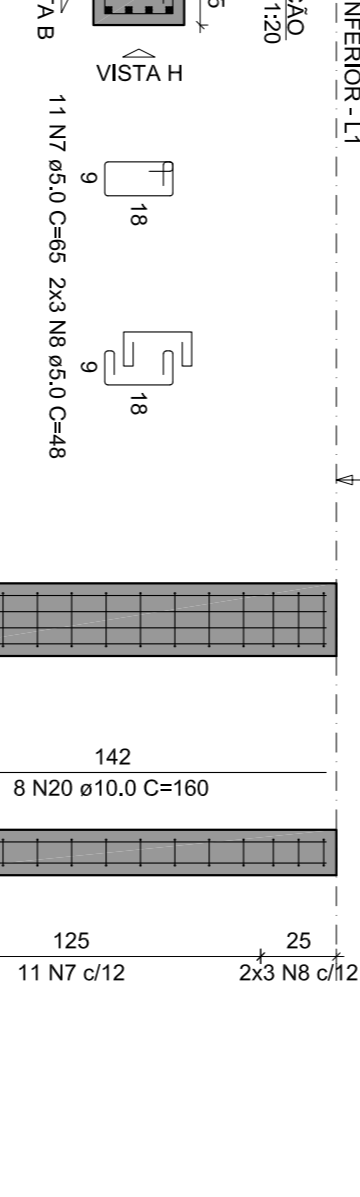
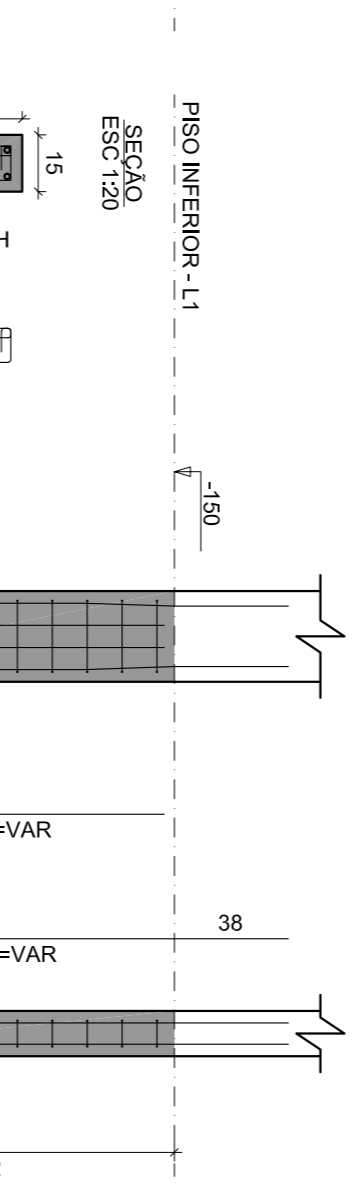
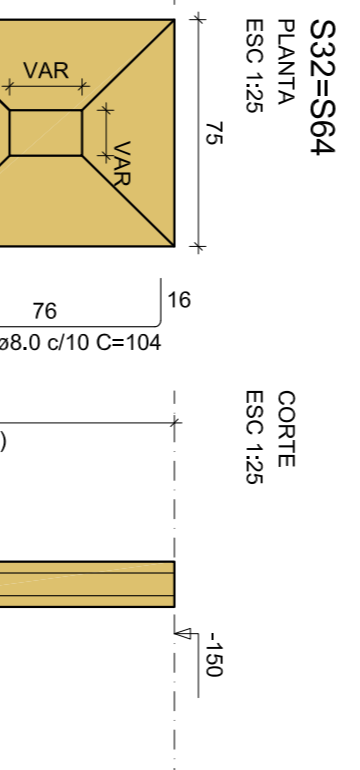


P64



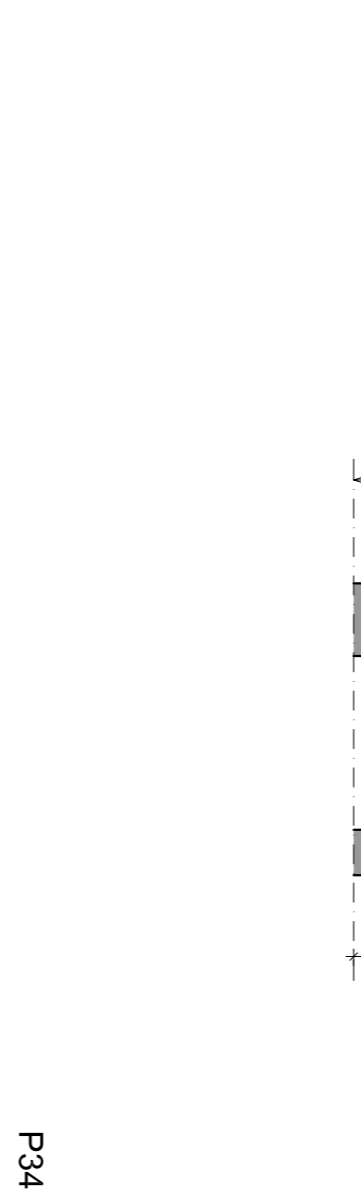
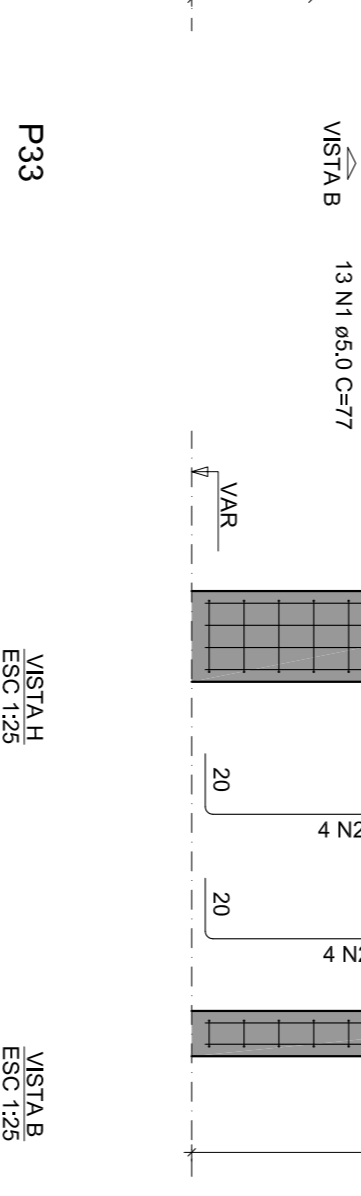
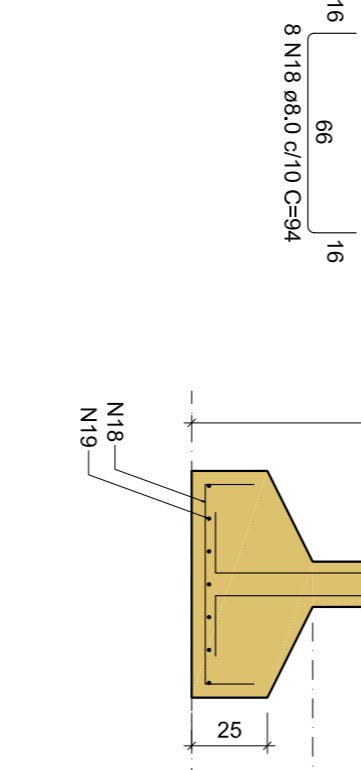
VISTA H
ESC: 1/25

VISTA B
ESC: 1/25



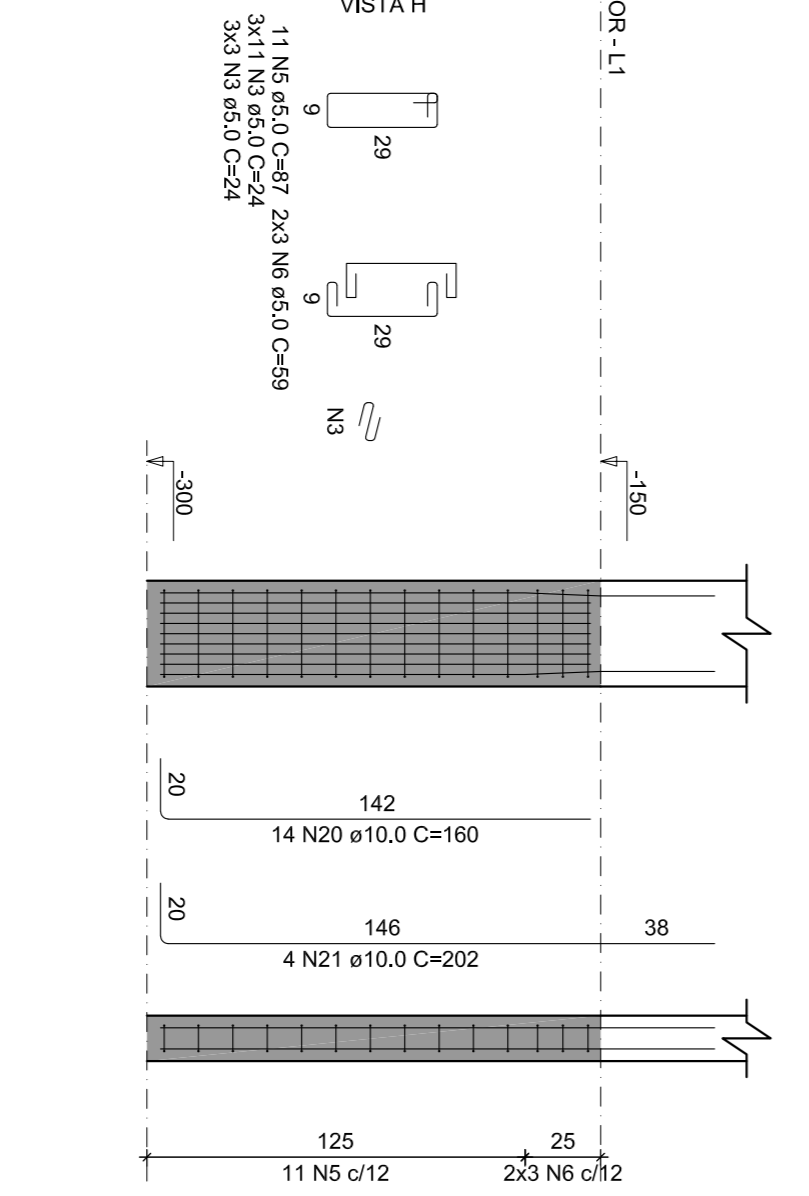
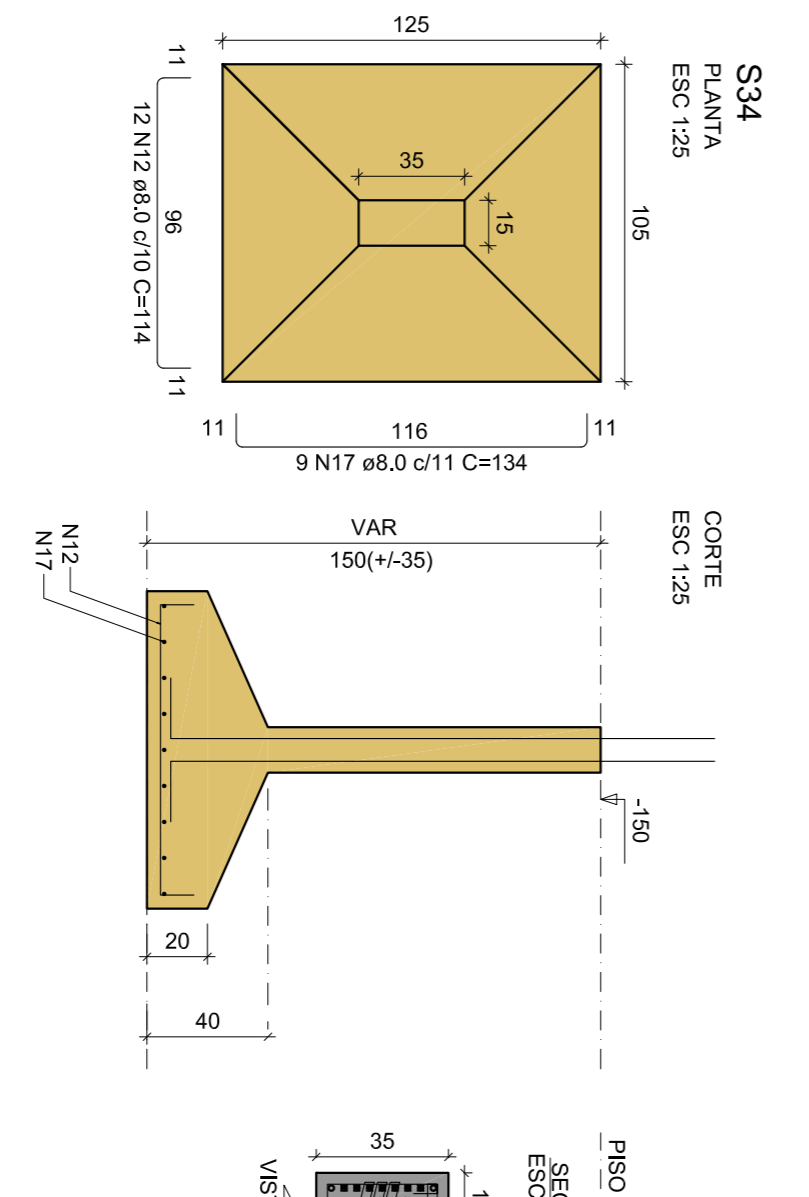
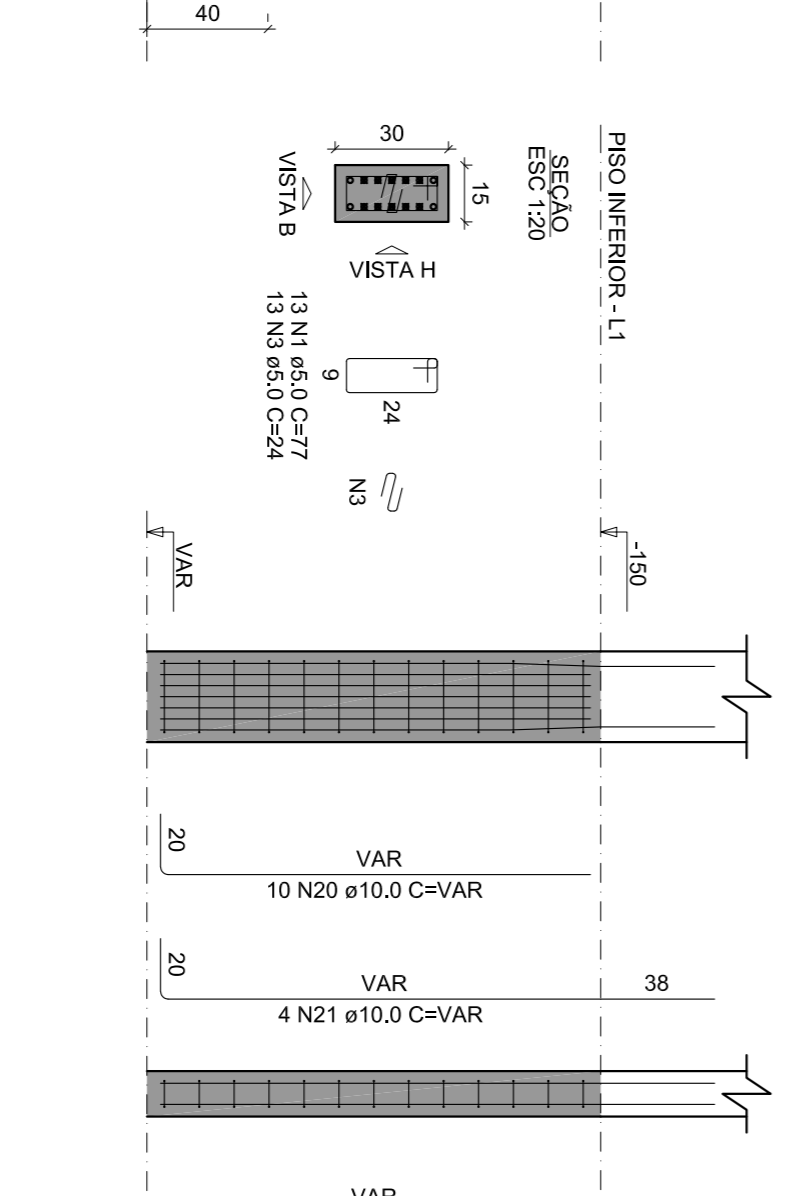
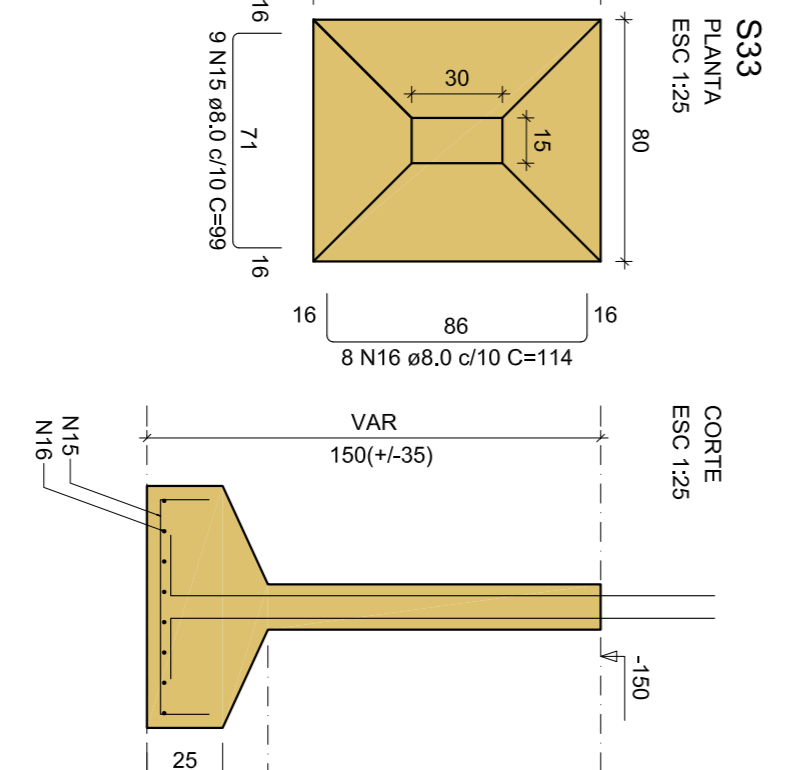
VISTA H
ESC: 1/25

VISTA B
ESC: 1/25



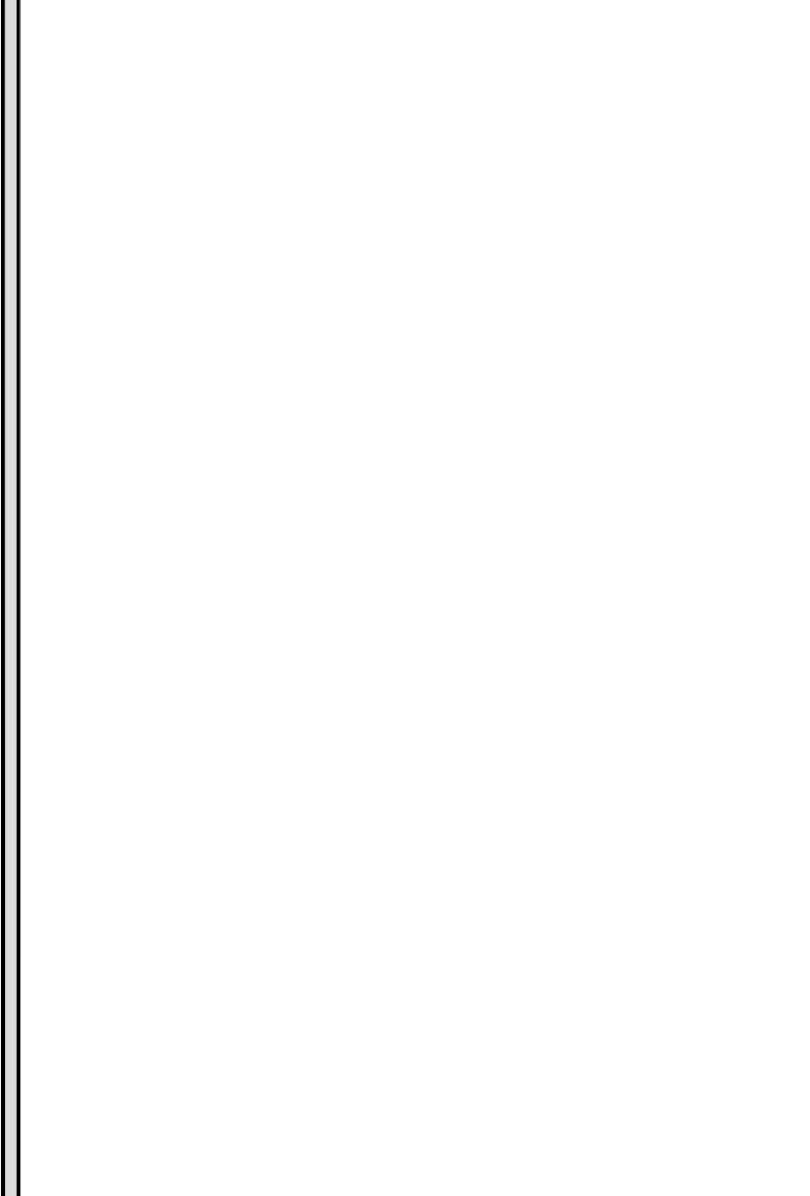
VISTA H
ESC: 1/25

VISTA B
ESC: 1/25



VISTA H
ESC: 1/25

VISTA B
ESC: 1/25



VISTA H
ESC: 1/25

VISTA B
ESC: 1/25