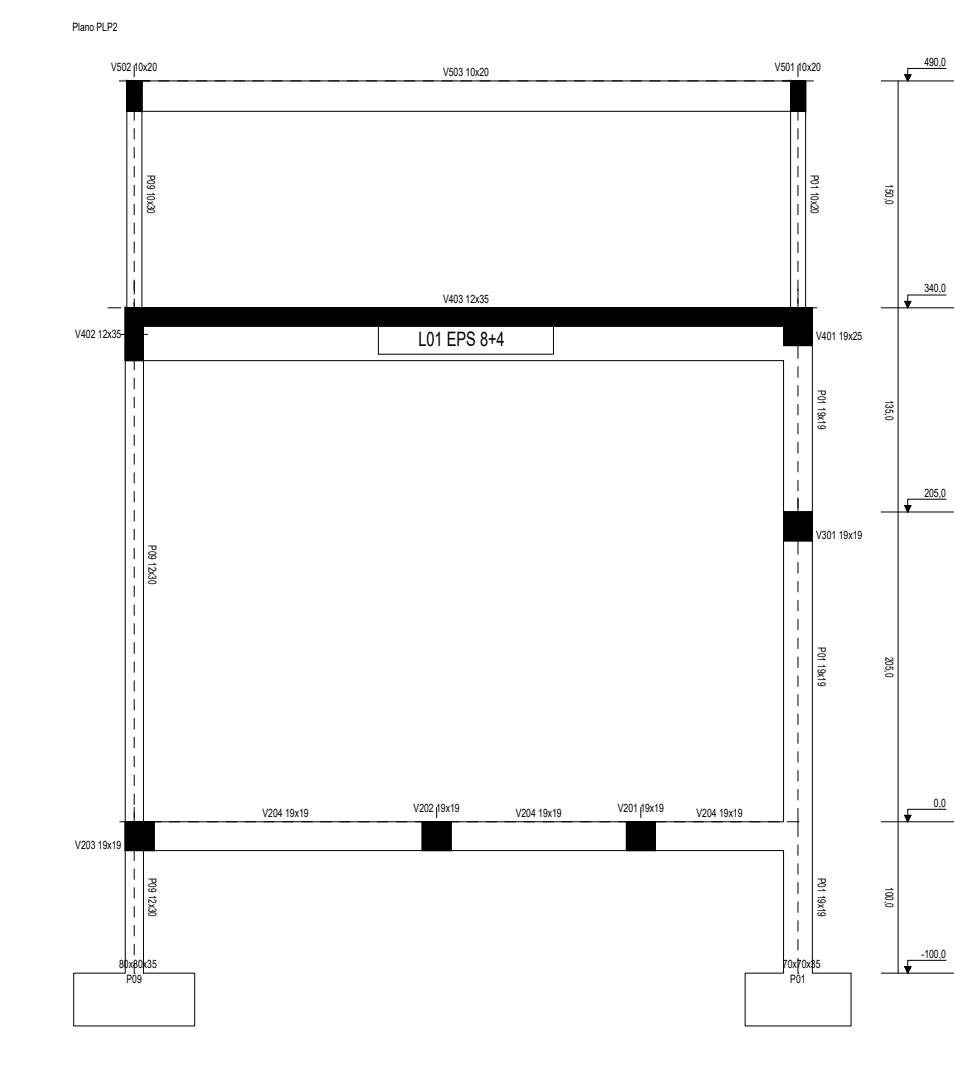
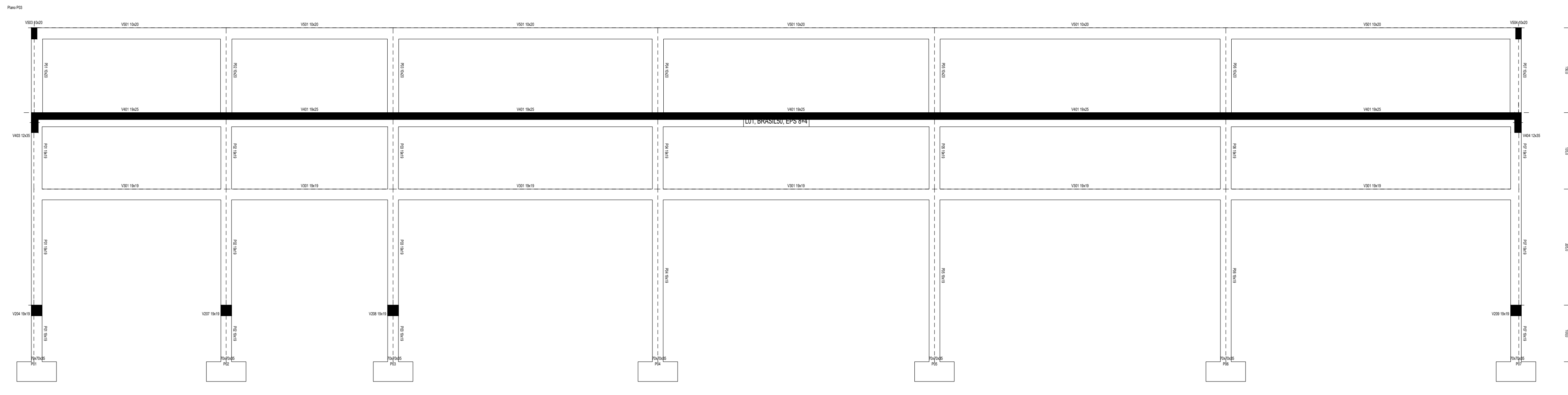


Plano P01



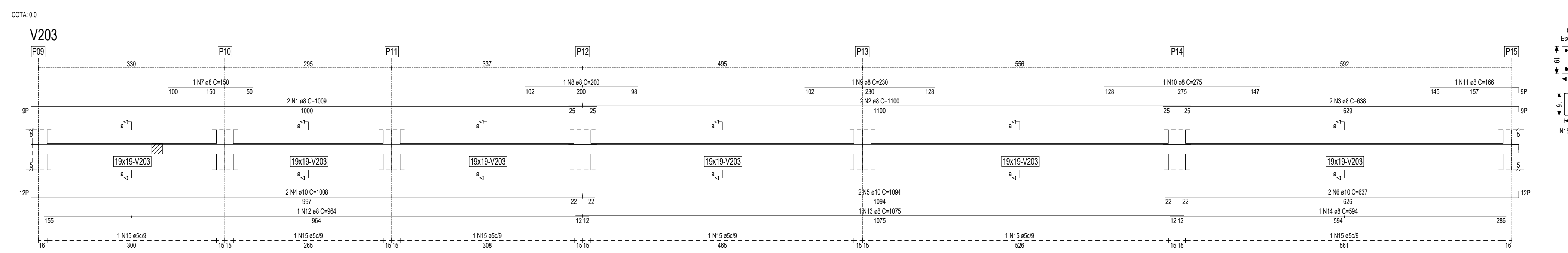
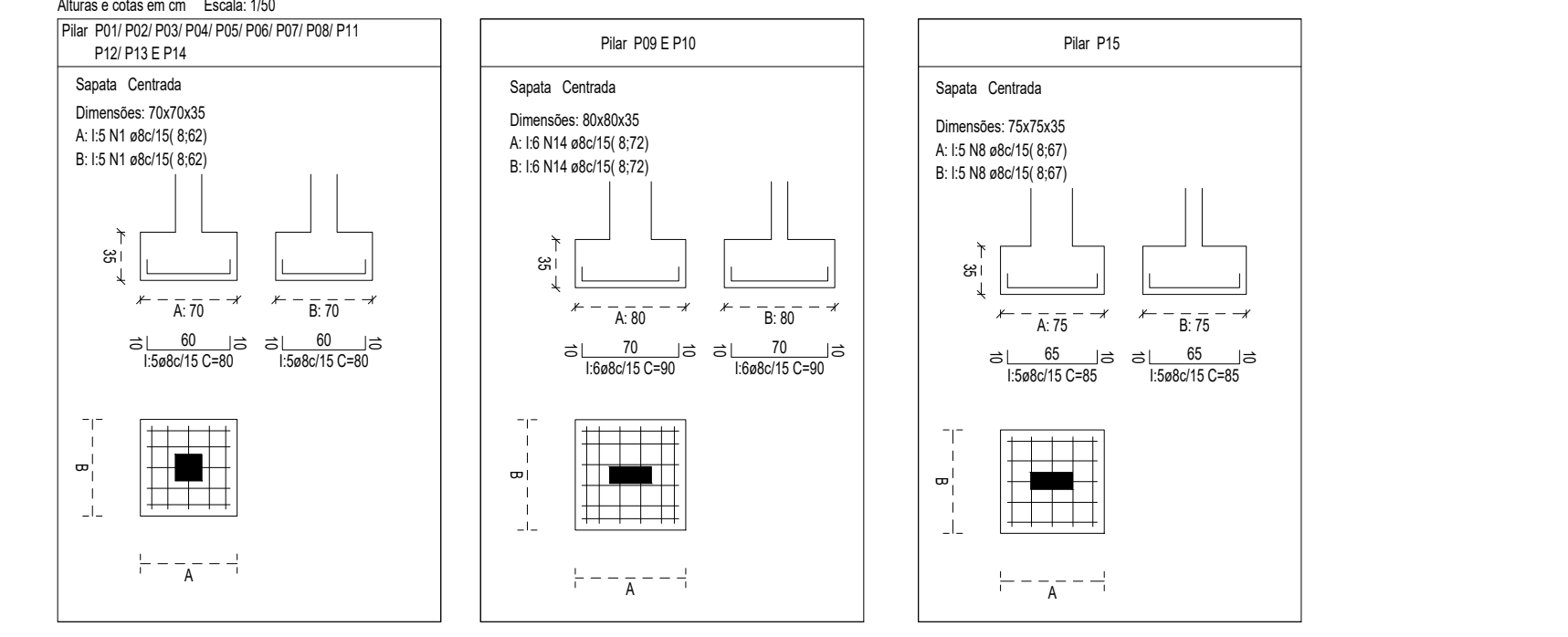
Plano P02

Tabela de ferros				
Barra	Pos	Qt.	Diâm. Comprimento unitário (cm)	Total (cm) CA-50 N (kg)
Sapatas				
Sapata 19 (P01)	1	10	ø8 800	3.258
			Total+10,0%	3.584
Sapata 20 (P02)	2	10	ø8 800	3.258
			Total+10,0%	3.584
Sapata 21 (P03)	3	10	ø8 800	3.258
			Total+10,0%	3.584
Sapata 22 (P04)	4	10	ø8 800	3.258
			Total+10,0%	3.584
Sapata 23 (P05)	5	10	ø8 800	3.258
			Total+10,0%	3.584
Sapata 24 (P06)	6	10	ø8 800	3.258
			Total+10,0%	3.584
Sapata 25 (P07)	7	10	ø8 800	3.258
			Total+10,0%	3.584
Sapata 26 (P15)	8	10	ø8 850	3.461
			Total+10,0%	3.807
Sapata 27 (P14)	9	10	ø8 800	3.258
			Total+10,0%	3.584
Sapata 28 (P13)	10	10	ø8 800	3.258
			Total+10,0%	3.584
Sapata 29 (P12)	11	10	ø8 800	3.258
			Total+10,0%	3.584
Sapata 30 (P11)	12	10	ø8 800	3.258
			Total+10,0%	3.584
Sapata 31 (P10)	13	12	ø8 1080	4.398
			Total+10,0%	4.838
Sapata 32 (P09)	14	12	ø8 1080	4.398
			Total+10,0%	4.838
Sapata 33 (P08)	15	10	ø8 800	3.258
			Total+10,0%	3.584
Total+10,0% (kg)				56.491
Total+10,0% (kg)				56.491

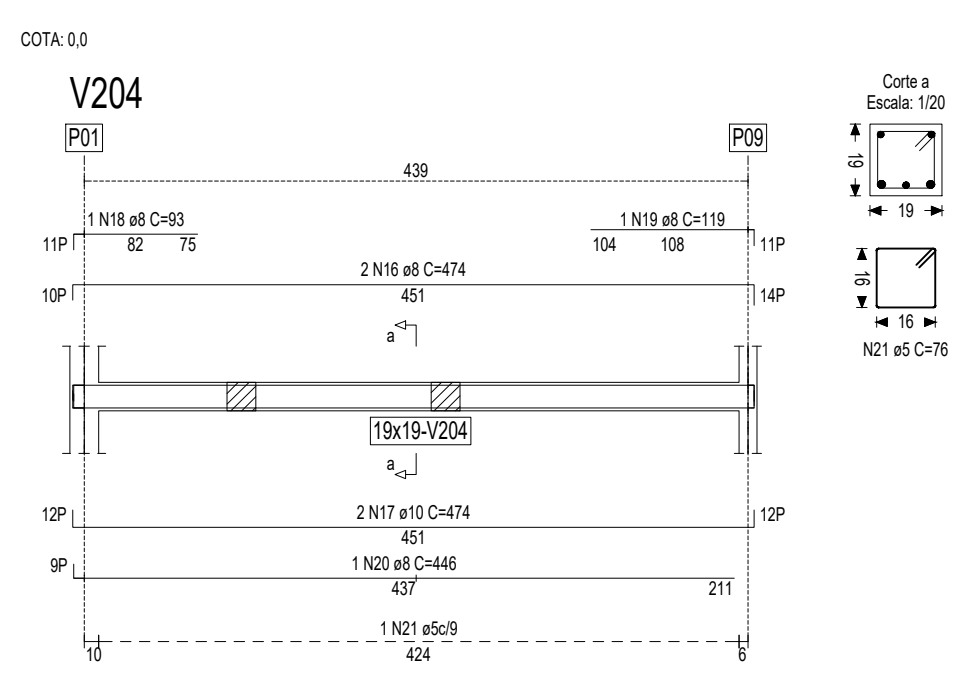


Plano P05

**QUADRO DE SAPATAS**

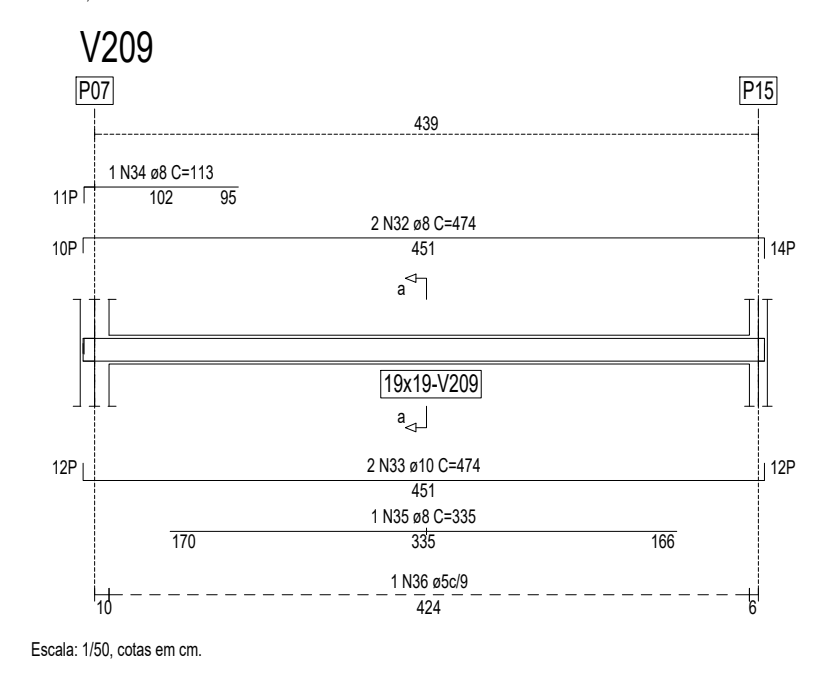


COTA 0.0

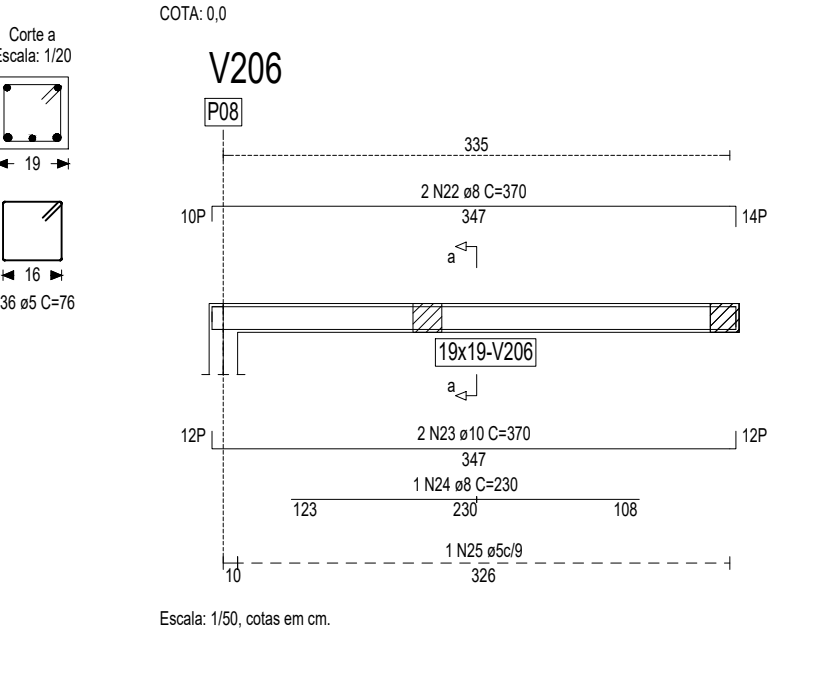


COTA 0.0

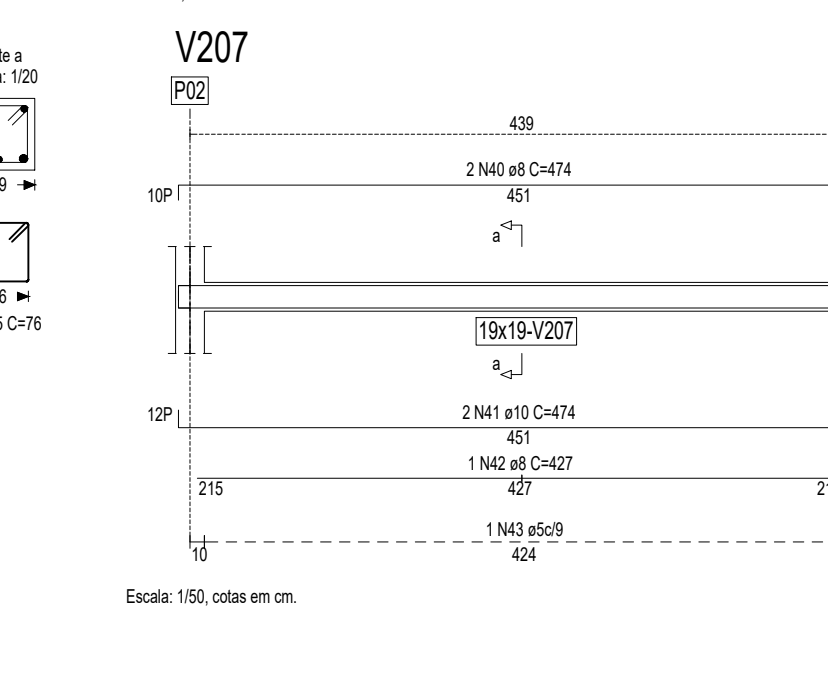
Tabela de ferros				
Barra	Pos	Qt.	Diâm. Comprimento unitário (cm)	Total (cm) CA-50 N (kg)
Vigas do pórtico				
V203	1	2	ø8 2018	8.218
	2	2	ø8 1100	8.959
	3	2	ø8 638	5.196
	4	2	ø10 1009	12.840
	5	2	ø10 1094	13.922
	6	2	ø10 638	8.119
	7	1	ø8 150	0.611
	8	1	ø8 200	0.814
	9	1	ø8 230	0.937
	10	1	ø8 275	1.120
	11	1	ø8 166	0.676
	12	1	ø8 994	3.926
	13	1	ø8 1075	4.378
	14	1	ø8 594	2.419
	15	272	ø5 76	32.882
Total+10,0%				115.520
V204	16	2	ø8 475	3.669
	17	2	ø10 475	6.045
	18	1	ø8 93	0.379
	19	1	ø8 119	0.465
	20	1	ø8 446	1.816
	21	47	ø5 76	3.572
Total+10,0%				20.105
V206	22	2	ø8 371	3.022
	23	2	ø10 371	4.721
	24	1	ø8 230	0.937
	25	36	ø5 76	4.352
Total+10,0%				14.335
V202	26	2	ø8 255	2.077
	27	2	ø10 255	3.245
	28	25	ø5 76	1.900
Total+10,0%				9.179
V201	29	2	ø8 255	2.077
	30	2	ø10 255	3.245
	31	24	ø5 76	1.824
Total+10,0%				9.046
Vigas fora do pórtico				
V209	32	2	ø8 475	3.669
	33	2	ø10 475	6.045
	34	1	ø8 113	0.460
	35	335	ø5 335	1.364
	36	47	ø5 76	3.572
Total+10,0%				19.129
V205	37	2	ø8 170	1.365
	38	2	ø10 174	2.214
	39	15	ø5 76	1.813
Total+10,0%				5.953
V207	40	2	ø8 475	3.669
	41	2	ø10 475	6.045
	42	1	ø8 427	1.739
	43	47	ø5 76	3.572
Total+10,0%				19.069
V208	44	2	ø8 475	3.669
	45	2	ø10 475	6.045
	46	1	ø8 335	1.364
	47	47	ø5 76	3.572
Total+10,0%				18.656
Total+10,0% (kg)				74.466
ø5				76.822
ø8				79.737
ø10				79.737
Total+10,0% (kg)				231.025



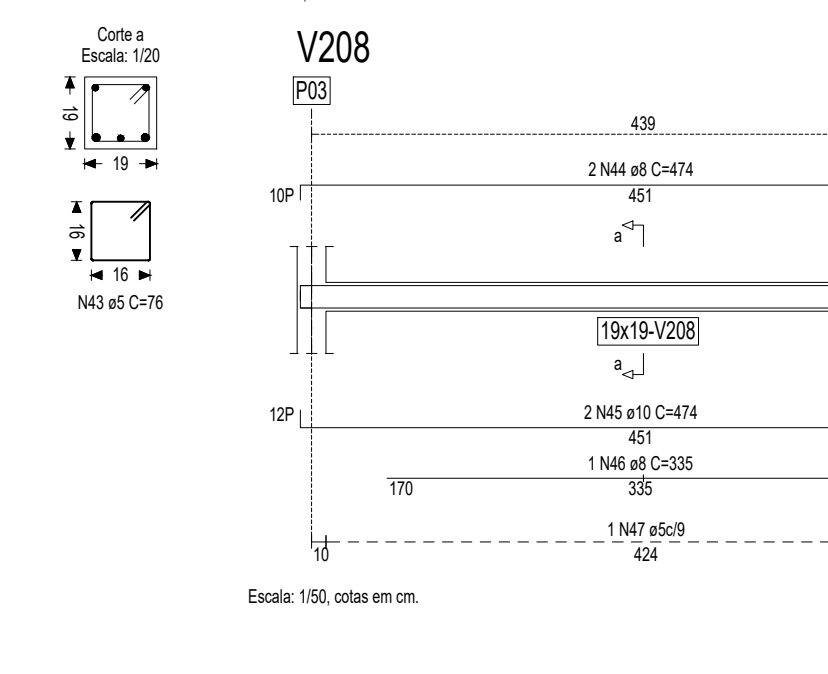
COTA 0.0



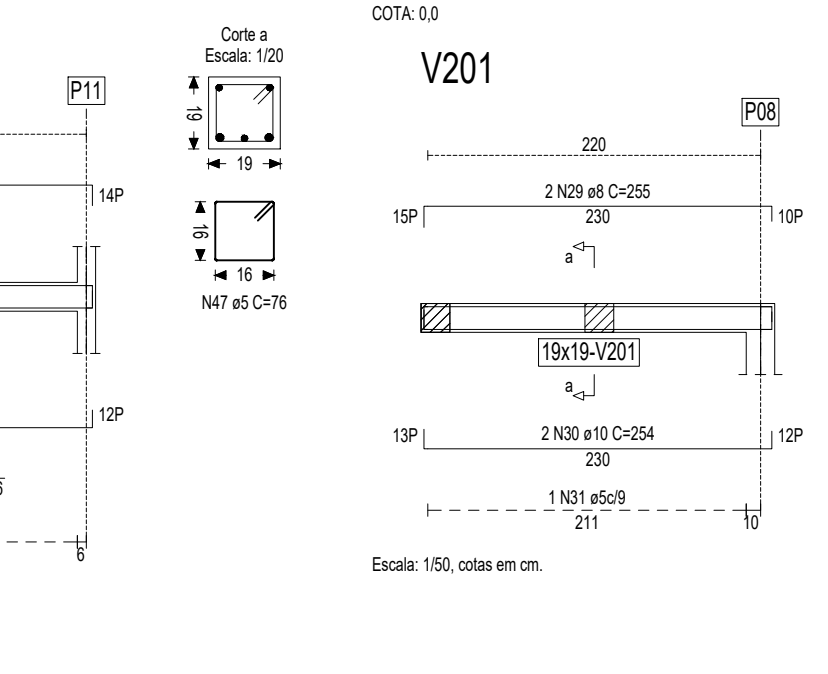
COTA 0.0



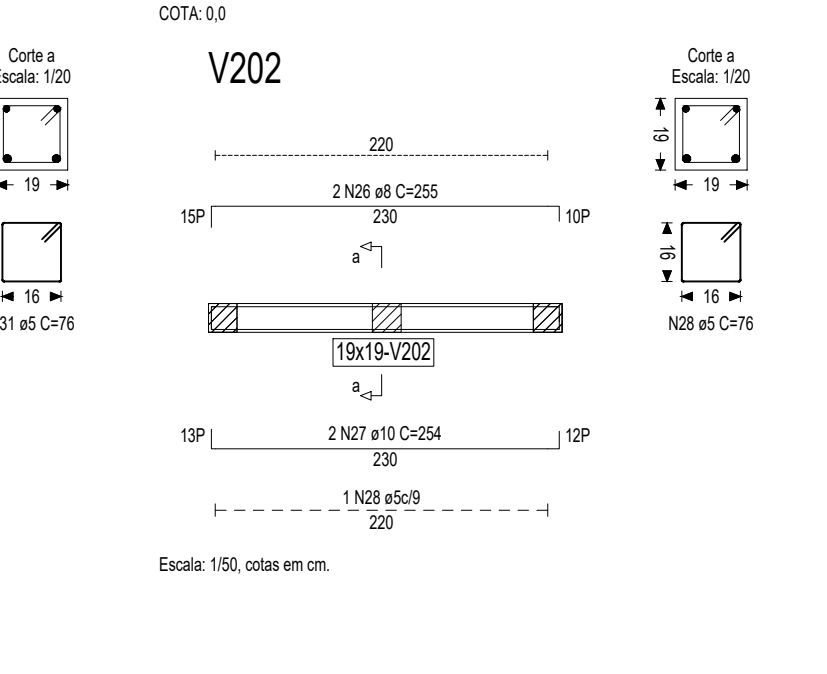
COTA 0.0



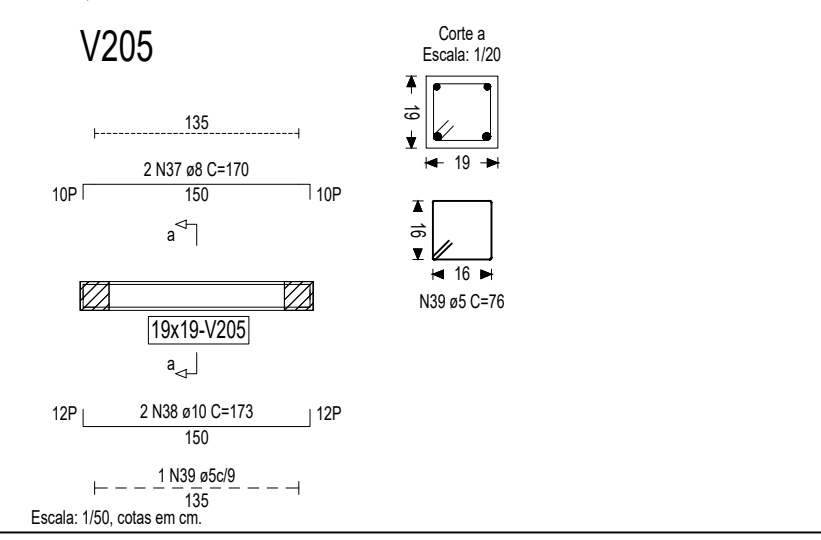
COTA 0.0



COTA 0.0



COTA 0.0



COTA 0.0

**PROJETO: BLOCO ADMINISTRATIVO E FACHADA**  
**PREFEITURA MUNICIPAL DE AÇAILÂNDIA**  
 SECRETARIA MUNICIPAL DE PLANEJAMENTO

**OBJETO: Construção do Bloco Administrativo e Reforma da Fachada Principal da Prefeitura Municipal de Açailândia**

**ENDEREÇO: Av. Santa Luzia S/N, Parque das Nações**  
**DESCRIÇÃO: Projeto Estrutural**  
**ADMINISTRADOR: Aluisio Silva Sousa**

**PROJETO ESTRUTURAL**  
**ÁREA DO TERRENO (m²):**  
**ÁREA CONSTRUIDA (m²):**  
**ÁREA LIVRE (m²):**

**RESPONSÁVEL TÉCNICO: ESC. DE PROJETOS Indicada**  
**DATA: 09/09/2022**

**FRANCA: 0202**