

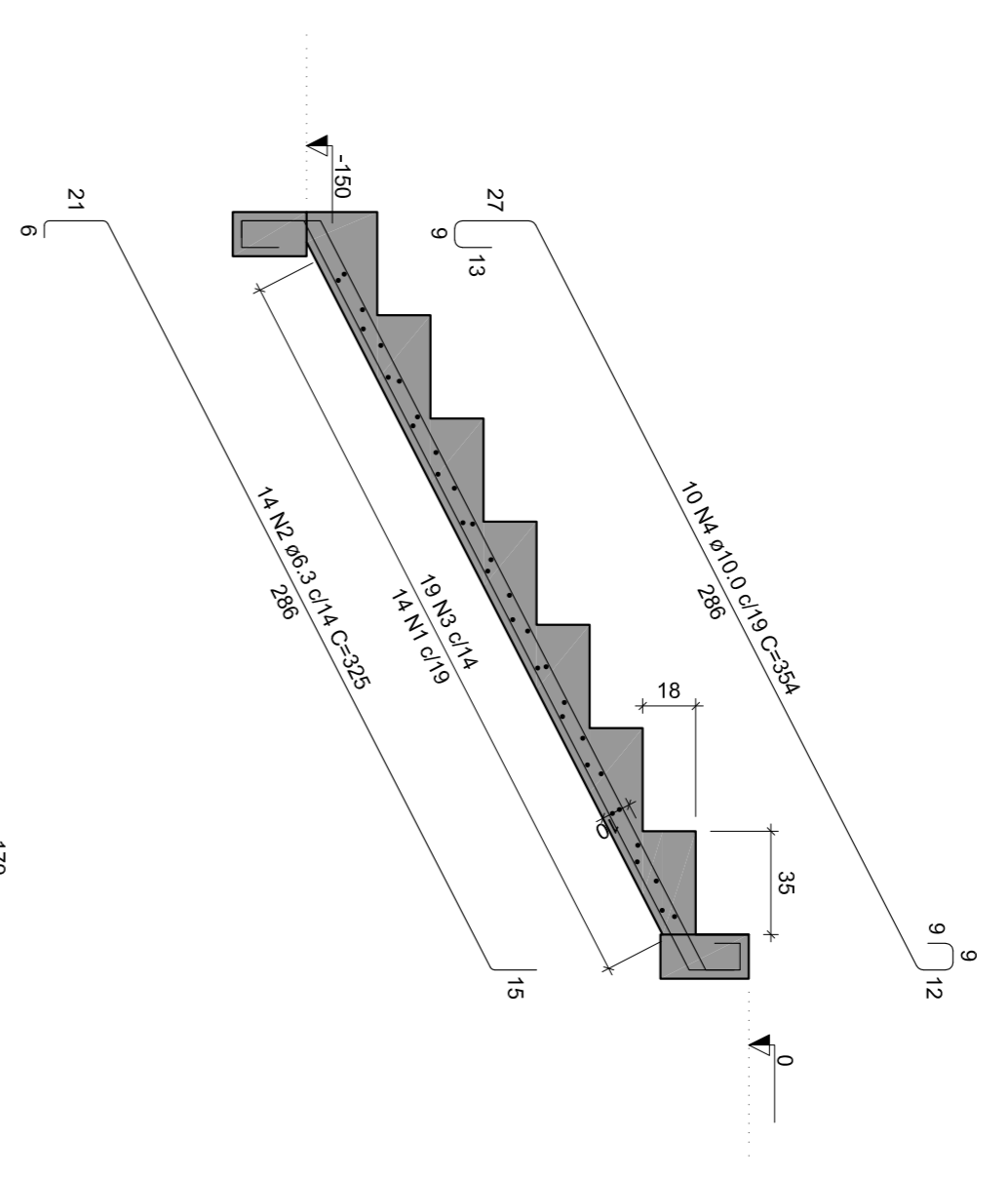
RELAÇÃO DO AÇO

LE1		LE2				
ACQ	N	DIAM (mm)	QUANT (UNID)	PESO (kg)	C.TOTAL (cm)	C.TOTAL (cm)
CA60	1	5,0	28	165	5180	5180
CA60	2	6,3	28	325	8100	8100
CA60	3	8,0	20	254	7880	7880
CA60	4	10,0	20	354		
PESO TOTAL						

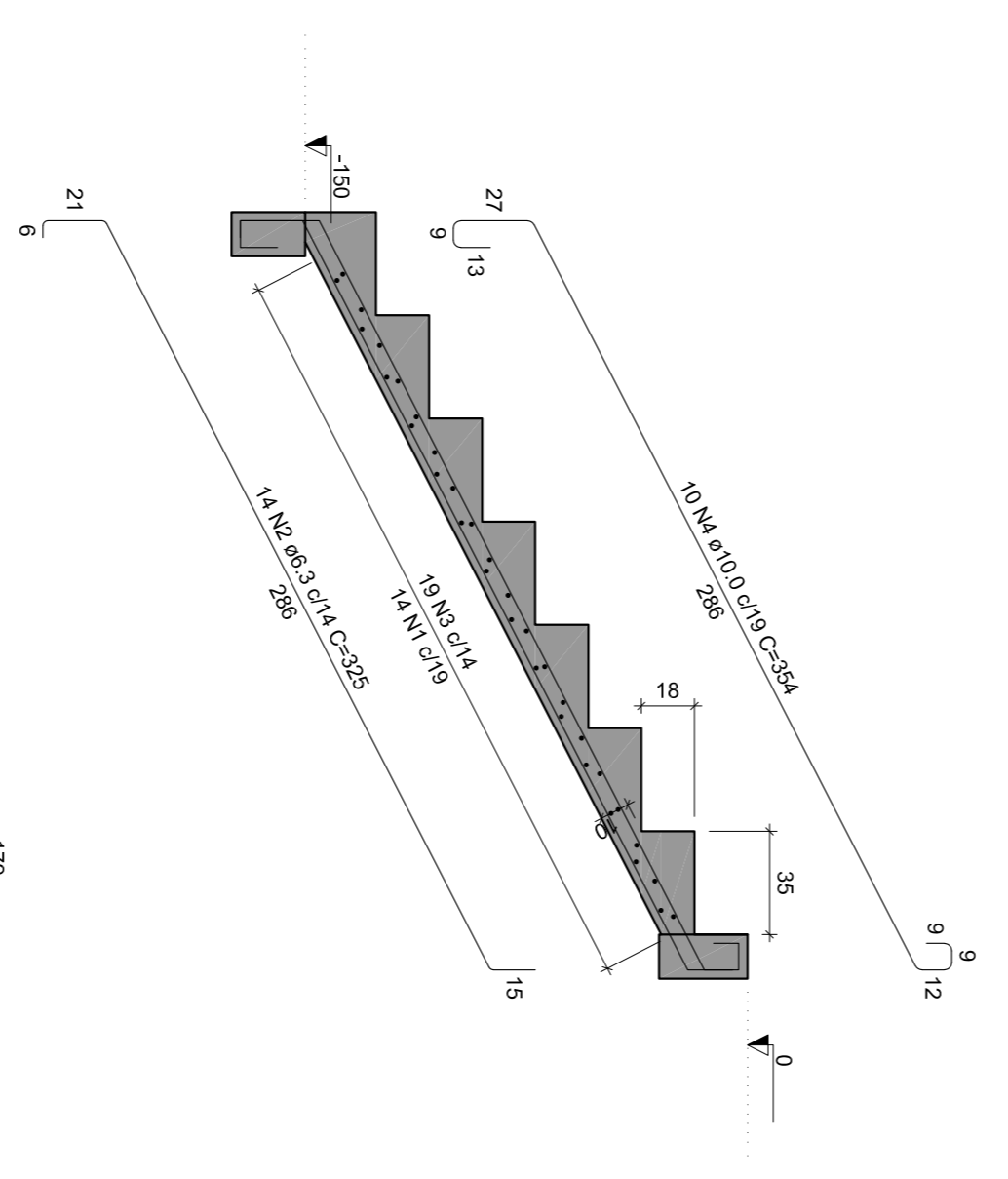
RESUMO DO AÇO

ACQ	DIAM (mm)	C.TOTAL (m)	PESO + 10% (kg)
CA60	6,3	91	24,5
CA60	8,0	68,5	30,2
CA60	10,0	51,8	8,8
PESO TOTAL			
CA50	1027		
CA60	8,8		

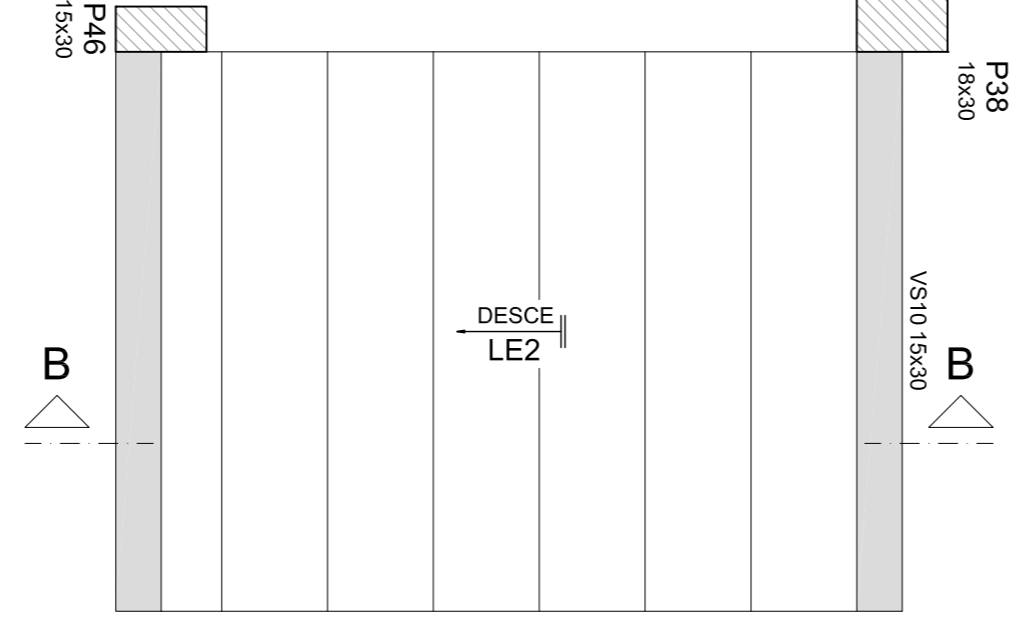
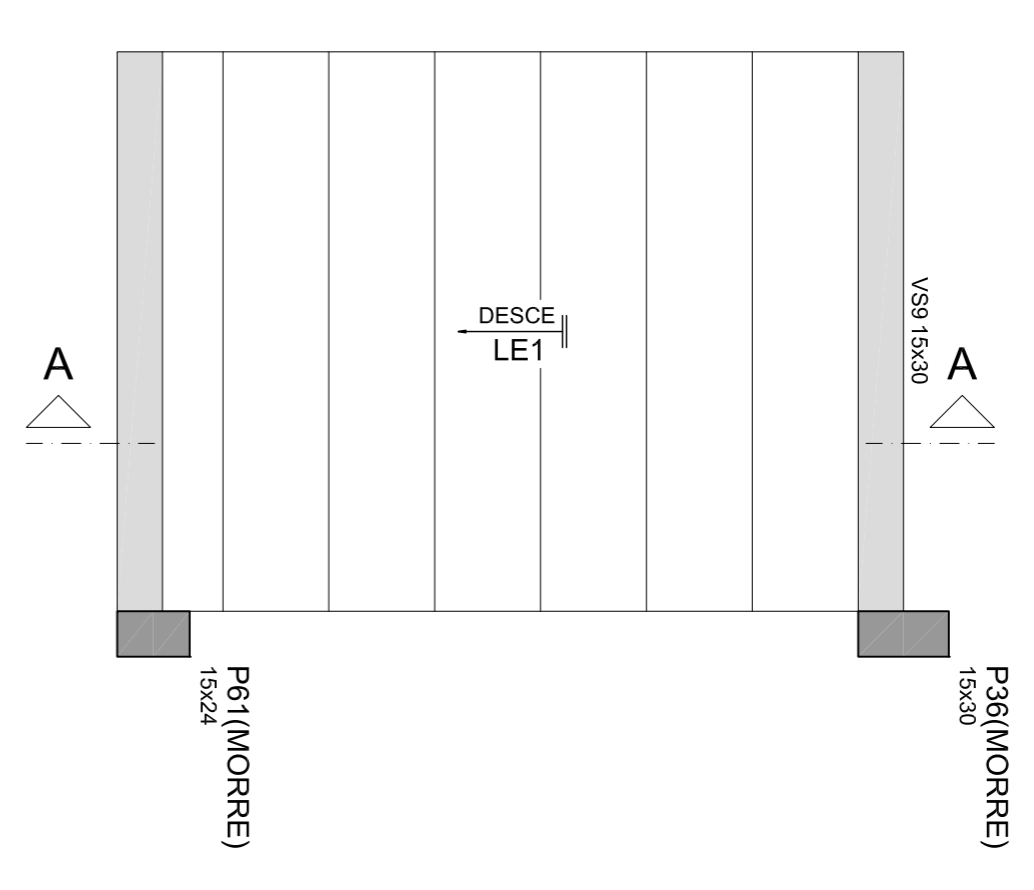
Volume de concreto (C-29) = 1,81 m³
 Área de forma = 17,61 m²



Corte A-A (LE1)
 ESC 1:25



Corte B-B (LE2)
 ESC 1:25



Armação positiva das escadas
 ESC 1:25

