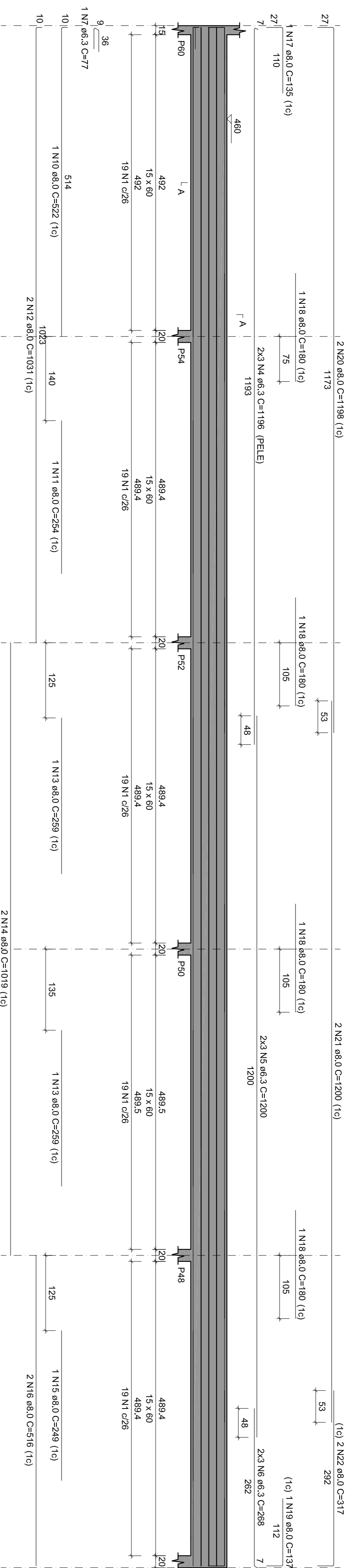
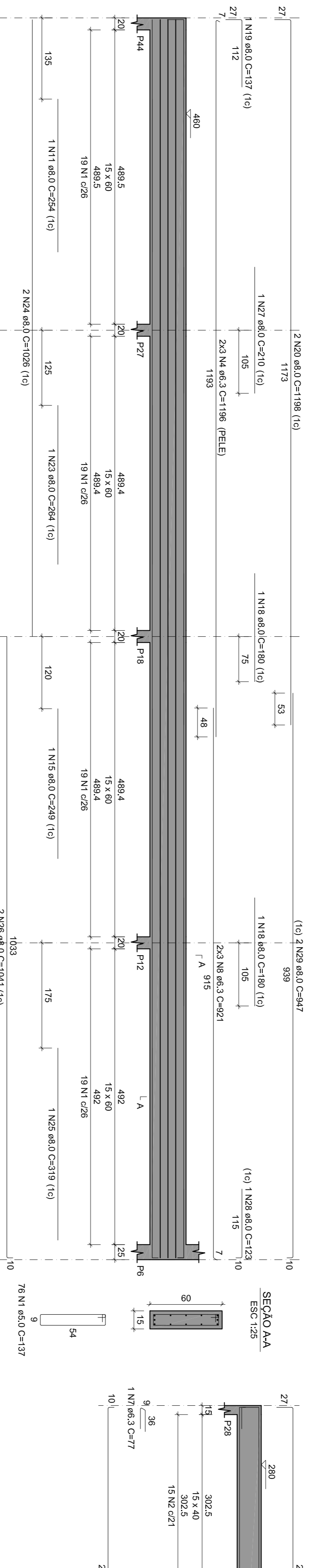


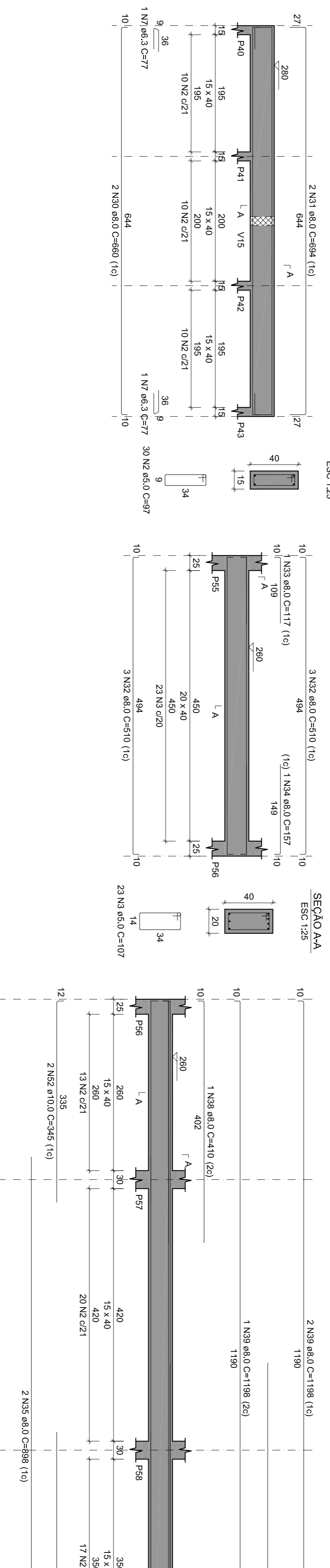
V7
ESC:150



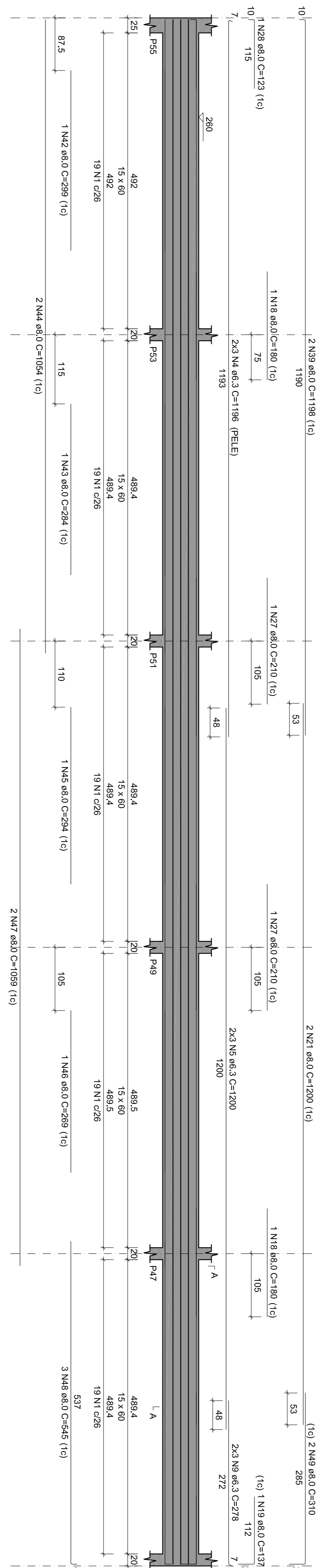
V8
ESC:150



V9
ESC:150



V10
ESC:150



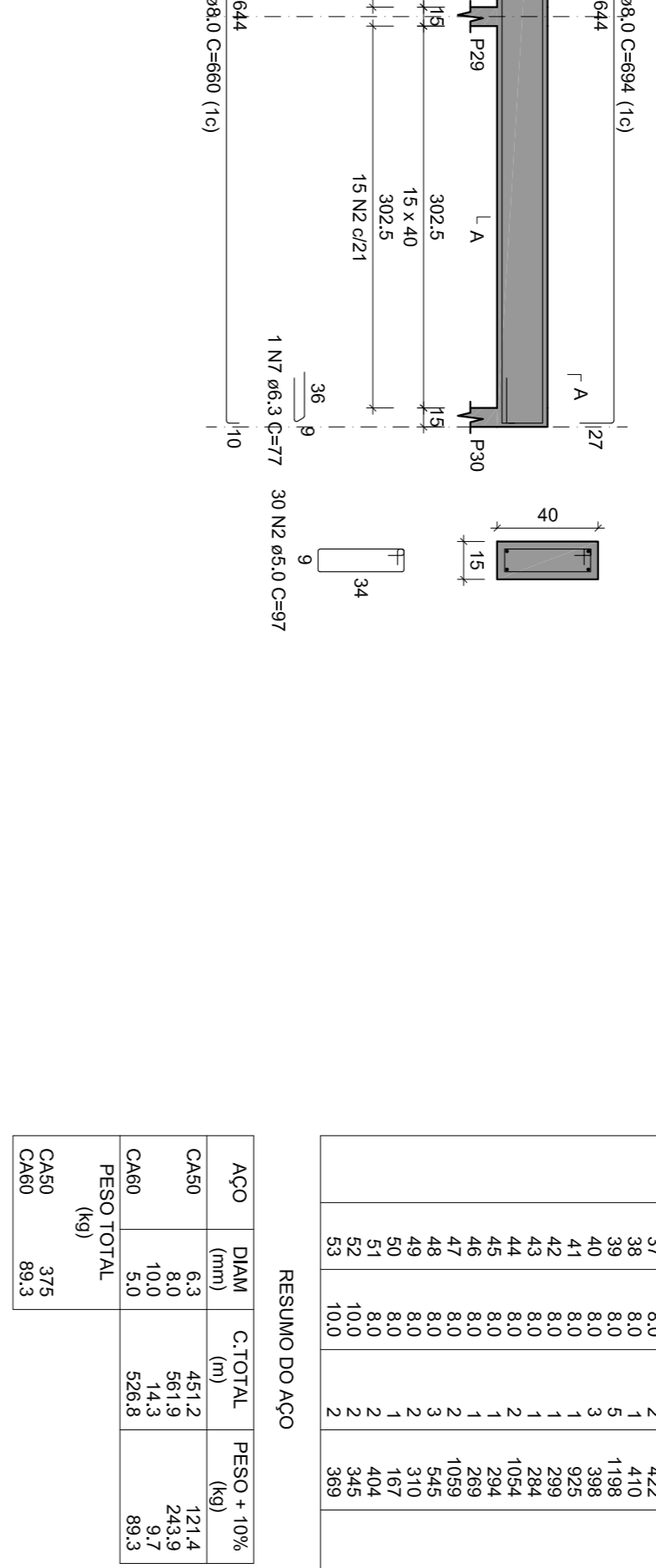
V11
ESC:150



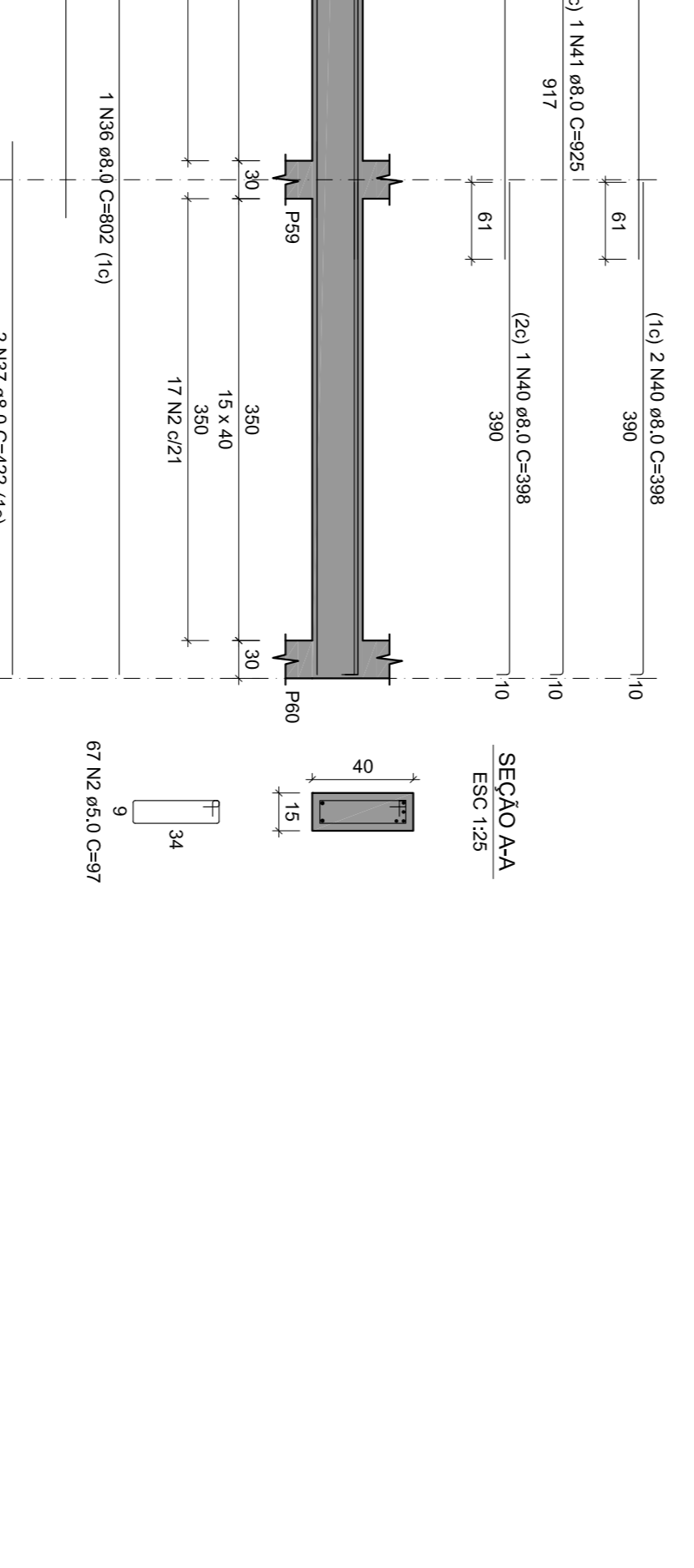
V12
ESC:150



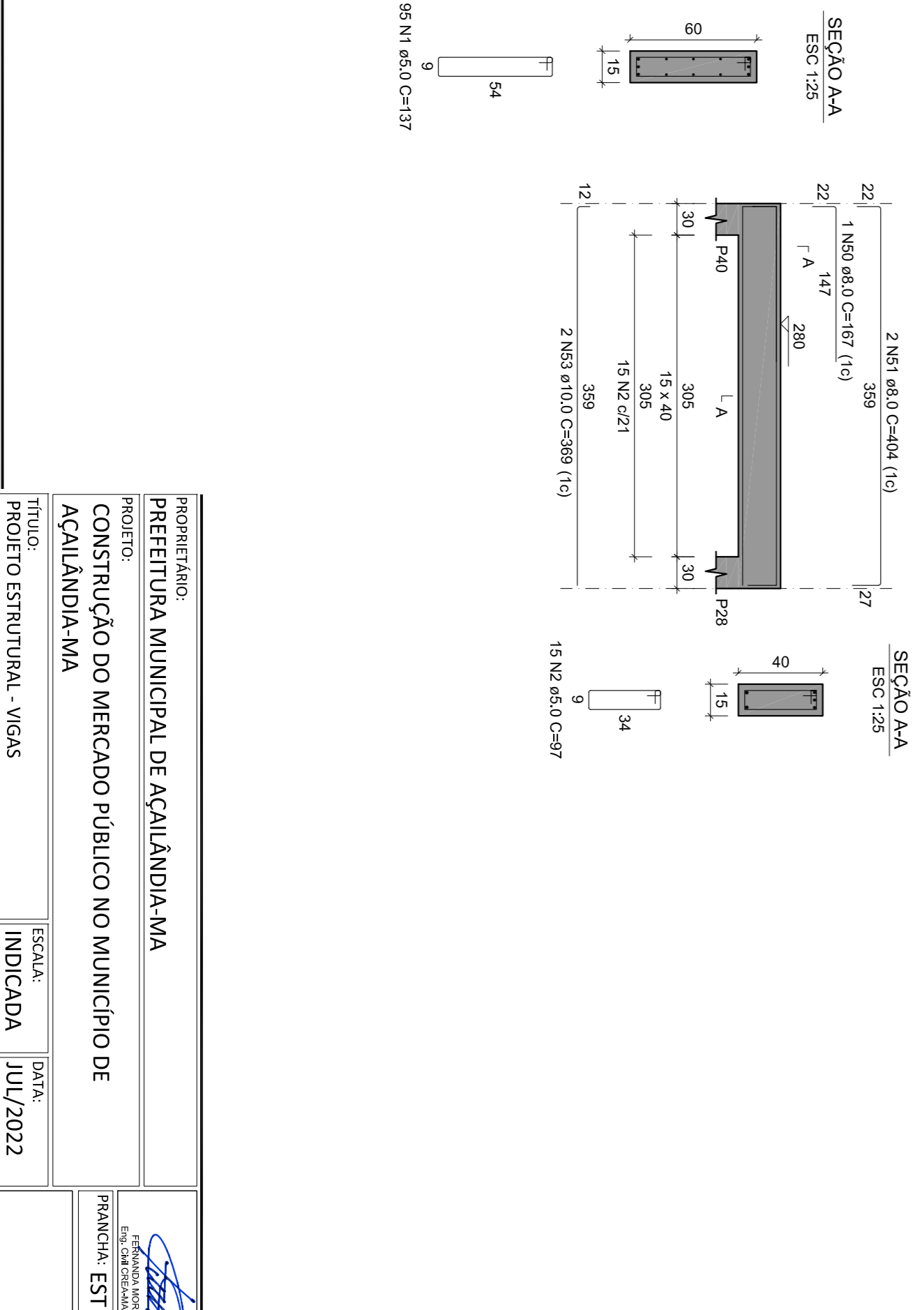
V13
ESC:130



V14
ESC:130



V15
ESC:130



ACO	N	DIAM (mm)	QUANT	C.UINT	C.TOTAL
CA60	1	142	286	1000	286000
CA60	2	107	97	1000	97000
CA60	3	23	23	1000	23000
CA60	4	107	107	1000	107000
CA60	5	63	12	1000	12000
CA60	6	63	6	268	1608
CA60	7	63	6	268	1608
CA60	8	63	6	278	1668
CA60	9	63	6	278	1668
CA60	10	63	6	278	1668
CA60	11	63	6	278	1668
CA60	12	63	6	278	1668
CA60	13	63	6	278	1668
CA60	14	63	6	278	1668
CA60	15	63	6	278	1668
CA60	16	63	6	278	1668
CA60	17	63	6	278	1668
CA60	18	63	6	278	1668
CA60	19	63	6	278	1668
CA60	20	63	6	278	1668
CA60	21	63	6	278	1668
CA60	22	63	6	278	1668
CA60	23	63	6	278	1668
CA60	24	63	6	278	1668
CA60	25	63	6	278	1668
CA60	26	63	6	278	1668
CA60	27	63	6	278	1668
CA60	28	63	6	278	1668
CA60	29	63	6	278	1668
CA60	30	63	6	278	1668
CA60	31	63	6	278	1668
CA60	32	63	6	278	1668
CA60	33	63	6	278	1668
CA60	34	63	6	278	1668
CA60	35	63	6	278	1668
CA60	36	63	6	278	1668
CA60	37	63	6	278	1668
CA60	38	63	6	278	1668
CA60	39	63	6	278	1668
CA60	40	63	6	278	1668
CA60	41	63	6	278	1668
CA60	42	63	6	278	1668
CA60	43	63	6	278	1668
CA60	44	63	6	278	1668
CA60	45	63	6	278	1668
CA60	46	63	6	278	1668
CA60	47	63	6	278	1668
CA60	48	63	6	278	1668
CA60	49	63	6	278	1668
CA60	50	63	6	278	1668
CA60	51	63	6	278	1668
CA60	52	63	6	278	1668
CA60	53	63	6	278	1668
CA60	54	63	6	278	1668
CA60	55	63	6	278	1668
CA60	56	63	6	278	1668
CA60	57	63	6	278	1668
CA60	58	63	6	278	1668
CA60	59	63	6	278	1668
CA60	60	63	6	278	1668
CA60	61	63	6	278	1668
CA60	62	63	6	278	1668
CA60	63	63	6	278	1668
CA60	64	63	6	278	1668
CA60	65	63	6	278	1668
CA60	66	63	6	278	1668
CA60	67	63	6	278	1668
CA60	68	63	6	278	1668
CA60	69	63	6	278	1668
CA60	70	63	6	278	1668
CA60	71	63	6	278	1668
CA60	72	63	6	278	1668
CA60	73	63	6	278	1668
CA60	74	63	6	278	1668
CA60	75	63	6	278	1668
CA60	76	63	6	278	1668
CA60	77	63	6	278	1668
CA60	78	63	6	278	1668
CA60	79	63	6	278	1668
CA60	80	63	6	278	1668
CA60	81	63	6	278	1668
CA60	82	63	6	278	1668
CA60	83	63	6	278	1668
CA60	84	63	6	278	1668
CA60	85	63	6	278	1668
CA60	86	63	6	278	1668
CA60	87	63	6	278	1668
CA60	88	63	6	278	1668
CA60	89	63	6	278	1668
CA60	90	63	6	278	1668
CA60	91	63	6	278	1668
CA60	92	63	6	278	1668
CA60	93	63	6	278	1668
CA60	94	63	6	278	1668
CA60	95	63	6	278	1668
CA60	96	63	6	278	1668
CA60	97	63	6	278	1668
CA60	98	63	6	278	1668
CA60	99	63	6	278	1668
CA60	100	63	6	278	1668

RESUMO DO AÇO

ACO	DIAM (mm)	C.TOTAL (m)	PESO + 10% (kg)
CA60	6.3	451.2	121.4
CA60	8.0	561.9	243.9
CA60	5.0	526.8	83.3
PESO TOTAL			448.6
CA50	3/75		
CA60	8/3.3		

Volume de concreto C-25 = 8.26 m³
Área de forma = 132.27 m²

PROPRIETÁRIO: PREFEITURA MUNICIPAL DE AÇAILÂNDIA-MA
 PROJETO: CONSTRUÇÃO DO MERCADO PÚBLICO NO MUNICÍPIO DE AÇAILÂNDIA-MA
 TÍTULO: PROJETO ESTRUTURAL - VIGAS
 ESCALA: INDICADA
 DATA: JUL/2022

PROF. CARLOS EDUARDO DE SOUZA
 INSC. Nº 11.000/2018
 CREA Nº 11.000/2018

PROF. CARLOS EDUARDO DE SOUZA
 INSC. Nº 11.000/2018
 CREA Nº 11.000/2018