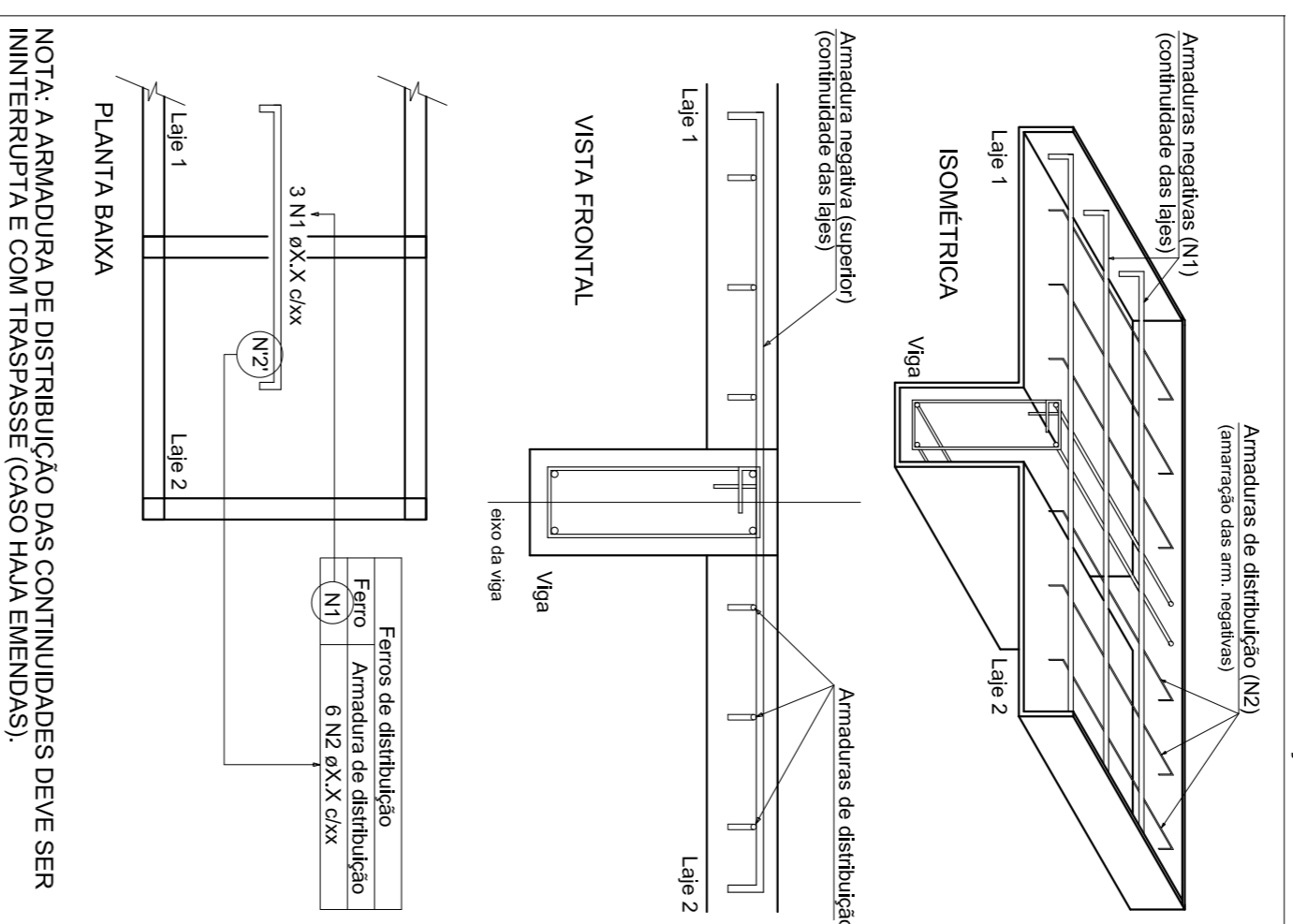


Armadura	Armaduras de distribuição
N18	6 N18 e5/0 c/20 C=120
N14	4 N4 e5/0 c/20 C=83
N3	4 N4 e5/0 c/20 C=77

DETALHE DA ARMADURA SUPERIOR DE CONTINUIDADE DA LAJE
E MONTAGEM DA ARMADURA DE DISTRIBUIÇÃO



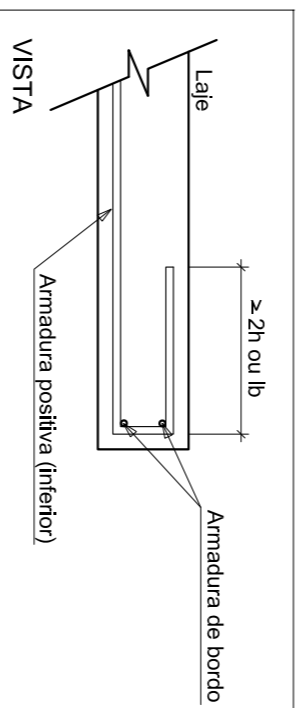
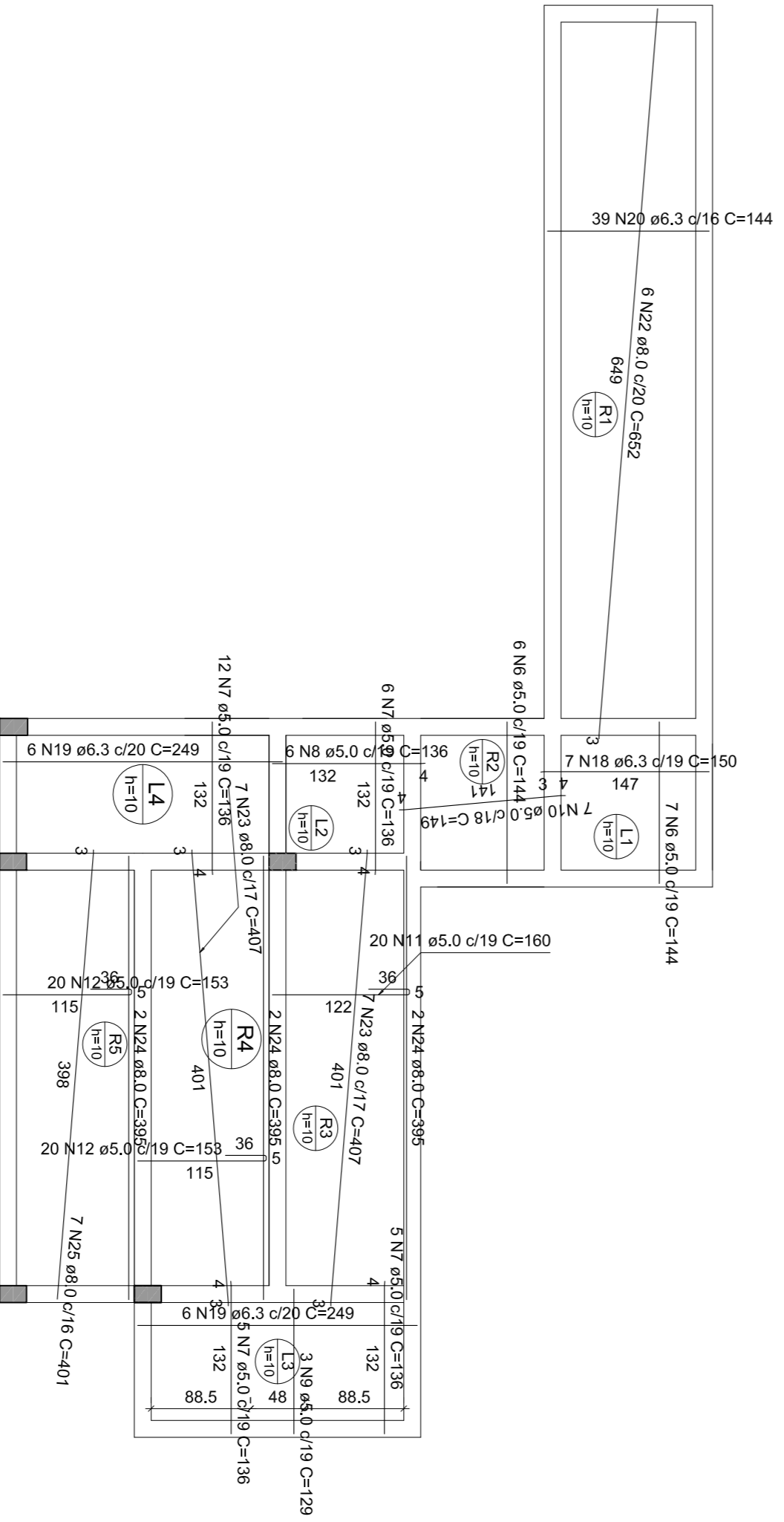
ACO	N	DIAM (mm)	C TOTAL (m)	PESOS		C TOTAL (cm)
				QUANT	CUMUL	
CAS0	1	5,0	6	120	720	
	2	5,0	4	93	332	
	3	5,0	8	77	616	
	4	5,0	1	85	85	
	5	5,0	13	144	1472	
	6	5,0	23	387	3870	
	7	5,0	6	136	816	
	8	5,0	3	129	387	
	9	5,0	3	129	387	
	10	5,0	20	153	6120	
CAS1	11	5,0	40	249	2490	
	12	5,0	2	124	346	
	13	5,0	2	124	346	
	14	5,0	2	124	346	
	15	5,0	12	150	1050	
	16	5,0	3	126	378	
	17	5,0	6	126	756	
	18	5,0	6	126	756	
	19	5,0	6	126	756	
	20	5,0	6	126	756	
CAS2	21	5,0	6	395	3950	
	22	5,0	7	401	2807	

RESUMO DO AÇO

ACO	DIAM (mm)	C TOTAL (m)	PESO * 10%
CAS0	6,3	102,8	27,7
CAS1	5,0	155,4	67,5
CAS2	5,0	155,4	39,2
PESO TOTAL			136,4

Volume de concreto (C-25) = 2,82 m³

Armação negativa das lajes do pavimento Piso superior
escala 1:50



DETALHE DA ARMADURA DE BORDO LIVRE DA LAJE

Armação positiva das lajes do pavimento Piso superior
escala 1:50