

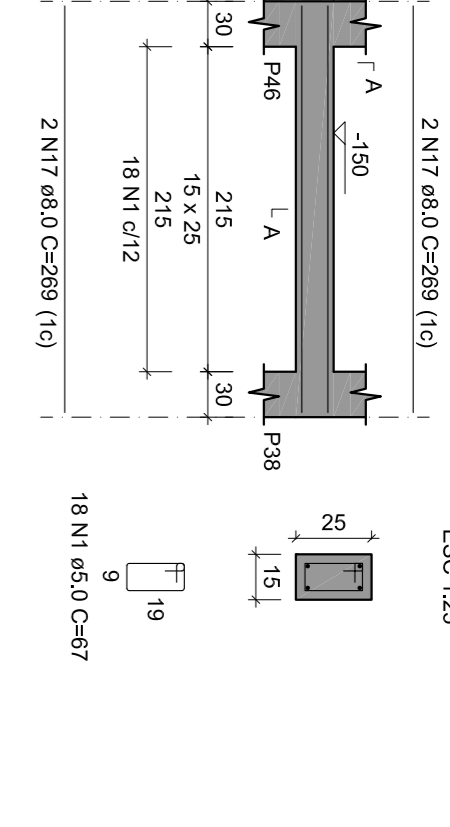
ACO	N	DIAM (mm)	QUANT	C/UNIT (cm)	C/TOTAL (cm)
VR24.1	1	5.0	67	50.955	3418.7
VR34.2	3	5.0	185	27.2	5052.0
VR44.2	4	5.0	17	127.05	2163.8
VR54.2	5	5.0	12	229	2748.0
VR64.2	7	5.0	38	117.7	4473.6
CA50	10	6.3	6	259	1554.0
	11	8.0	2	414	828.0
	12	8.0	2	1076	2152.0
	14	8.0	2	1198	2357.6
	15	8.0	2	537	1074.0
	17	8.0	2	269	538.0
	18	8.0	2	1254	2508.0
	20	8.0	2	1019	2038.0
	21	8.0	2	224	448.0
	22	8.0	2	557	1114.0
	24	8.0	2	350	700.0
	25	8.0	2	377	754.0
	27	8.0	2	462	924.0
	28	8.0	2	494	988.0
	30	8.0	2	219	438.0
	31	8.0	2	319	638.0
	32	8.0	2	802	1604.0
	33	8.0	2	80	160.0
	34	8.0	2	422	844.0
	35	8.0	4	803	3212.0
	37	8.0	1	162	324.0
	38	8.0	1	432	864.0
	40	8.0	1	140	280.0
	41	8.0	2	855	1710.0
	42	8.0	4	1200	4800.0
	44	8.0	2	854	1708.0
	45	8.0	2	390	780.0
	46	8.0	2	544	1088.0
	48	8.0	3	232	464.0
	51	10.0	2	197	394.0
	52	10.0	2	220	440.0
	53	10.0	2	52	104.0
	54	10.0	2	1132	2264.0
	55	10.0	3	345	690.0
	58	10.0	2	484	968.0
	59	10.0	2	464	928.0
	60	10.0	2	564	1128.0
	61	10.0	2	127	254.0
	62	10.0	2	663	1326.0
	63	10.0	1	519	1038.0
	65	12.5	3	1197	3591.0
	66	12.5	1	480	960.0
	67	12.5	2	491	982.0

RESUMO DO AÇO

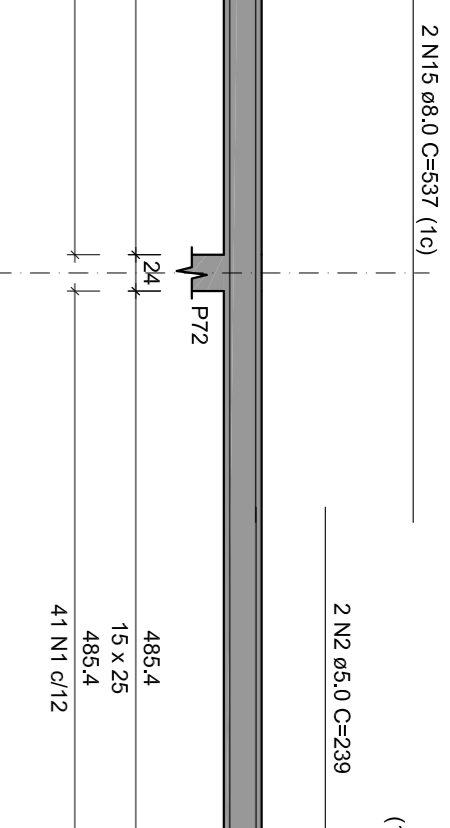
ACO	DIMAS	C/TOTAL (m)	PESO + 10% (kg)
CA50	8.0	16.9	4.6
CA50	10.0	491.5	213.3
CA50	5.0	703.7	85.4
PESO TOTAL			119.3
CA50	366.8		
CA60	119.3		

Volume de concreto (C-25) = 5.16 m³
Área de forma = 95.69 m²

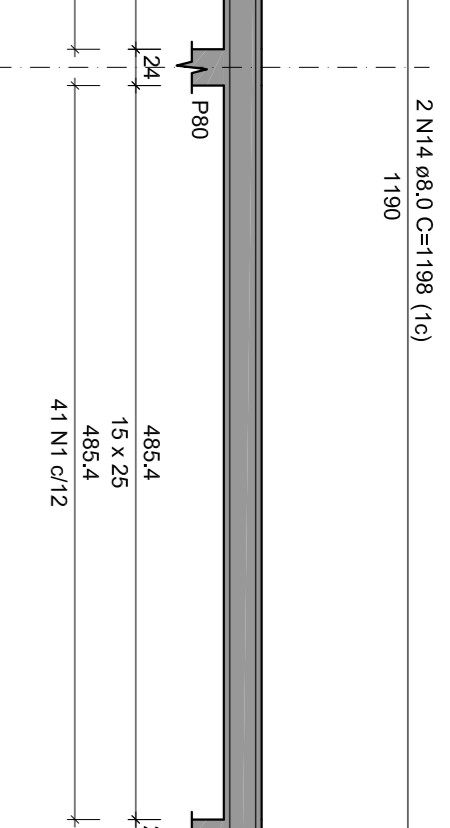
VI28



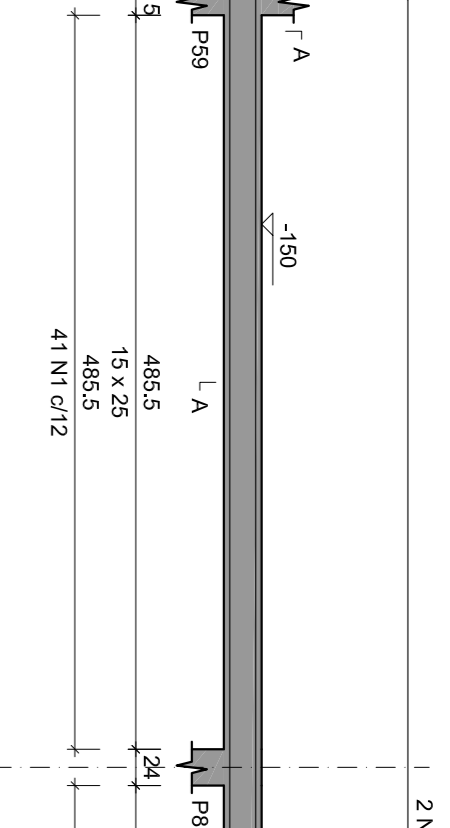
VI27



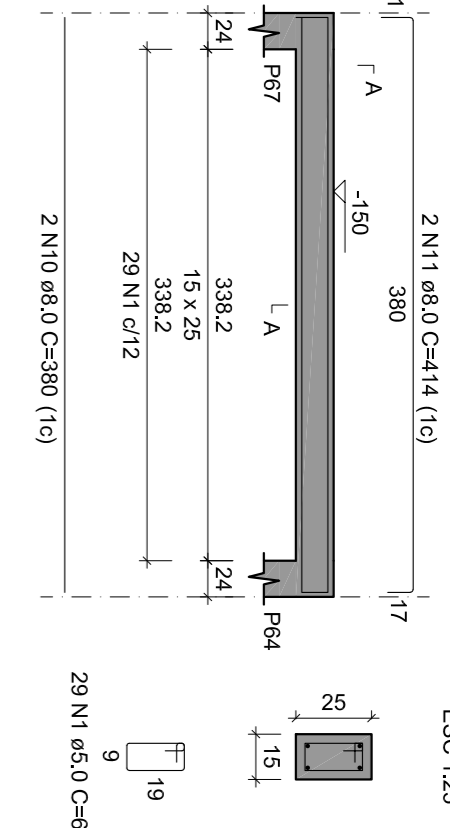
VI26



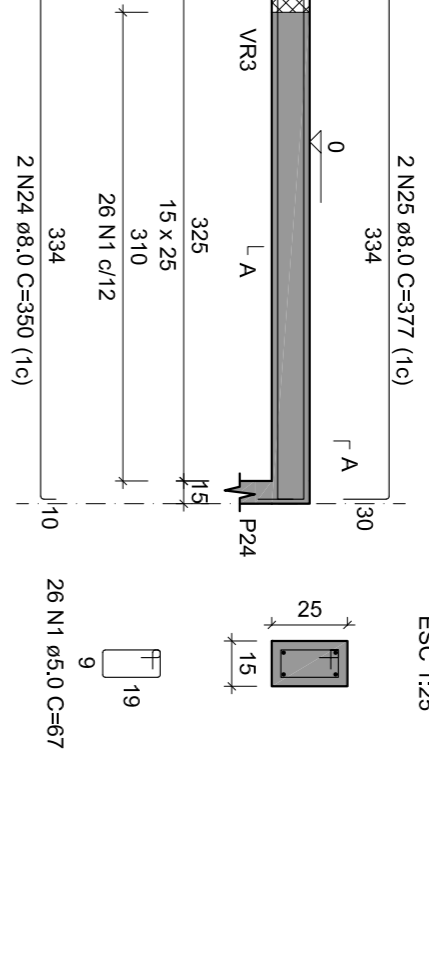
VI29



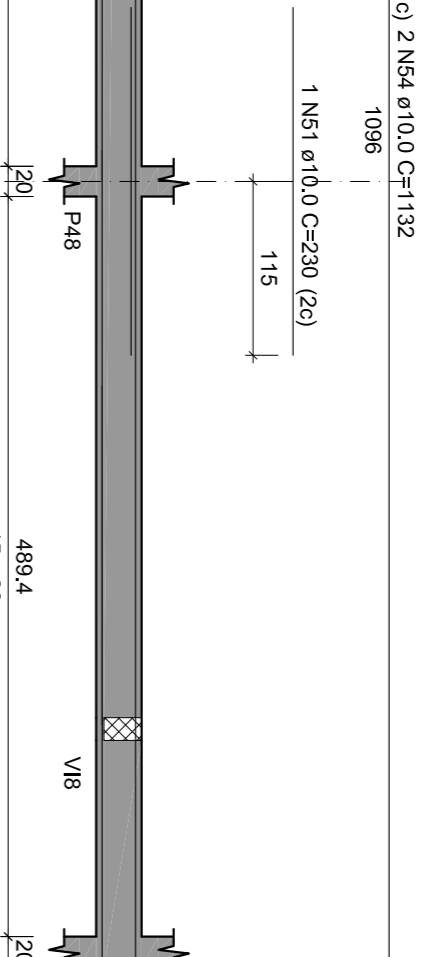
VI26



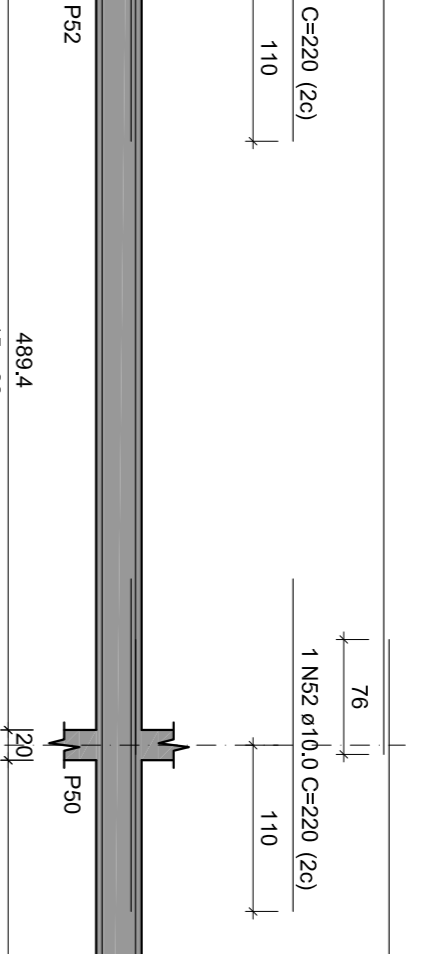
VR1



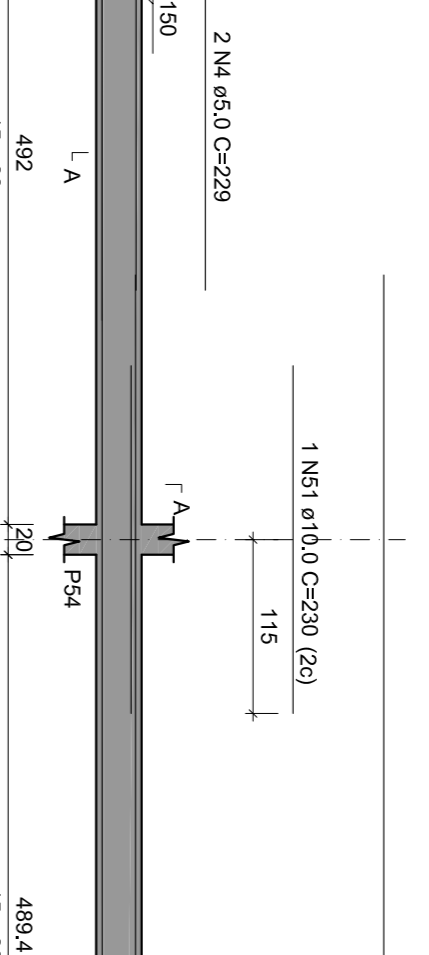
VR2



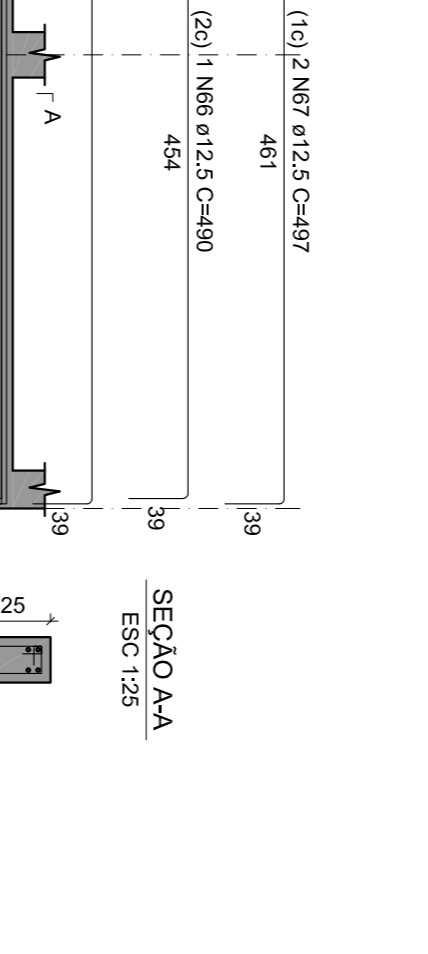
VR3



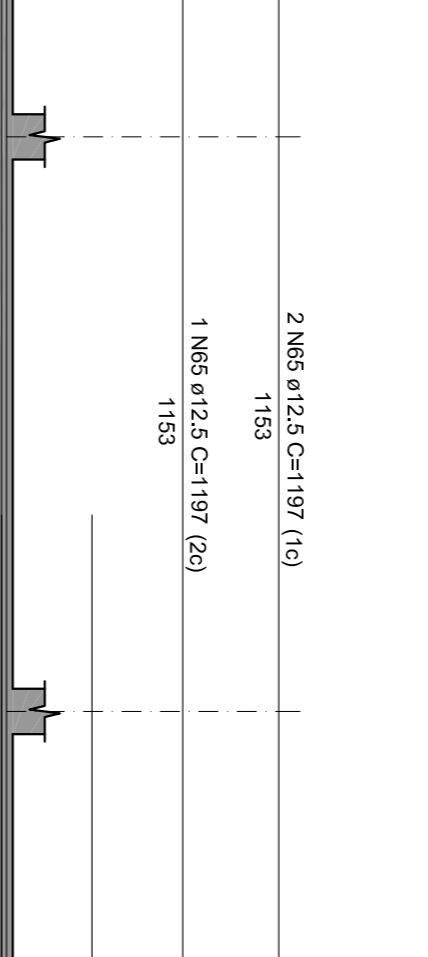
VR4



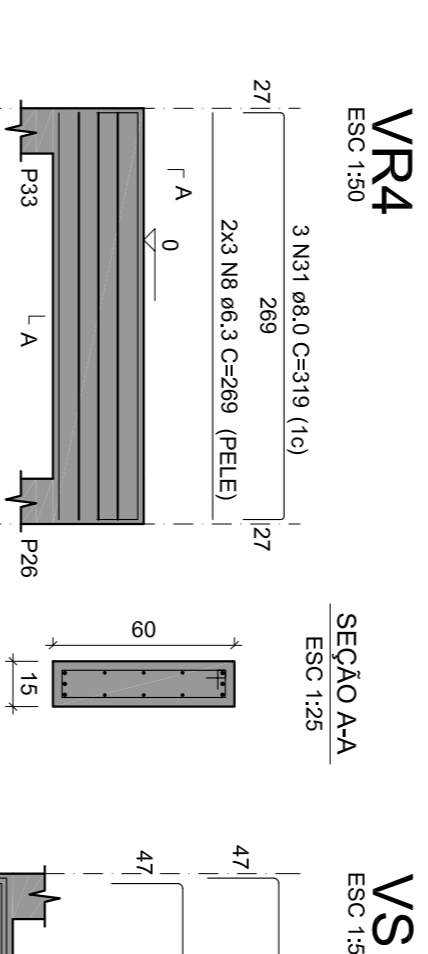
VR1



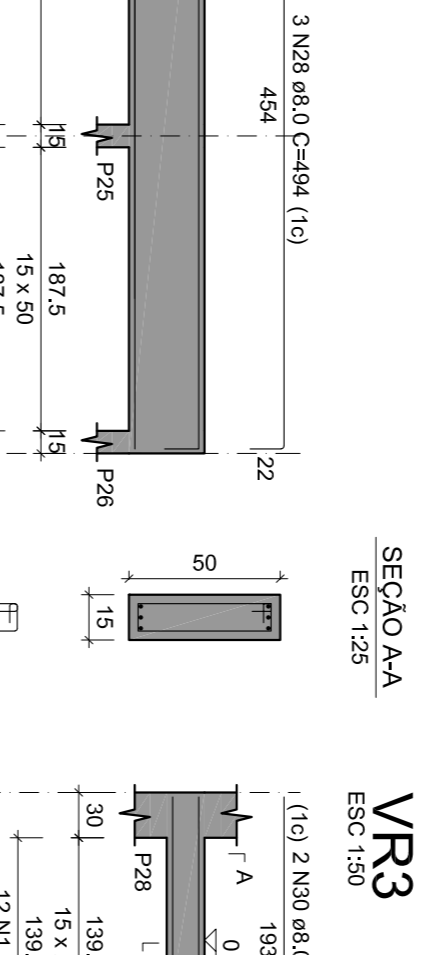
VR2



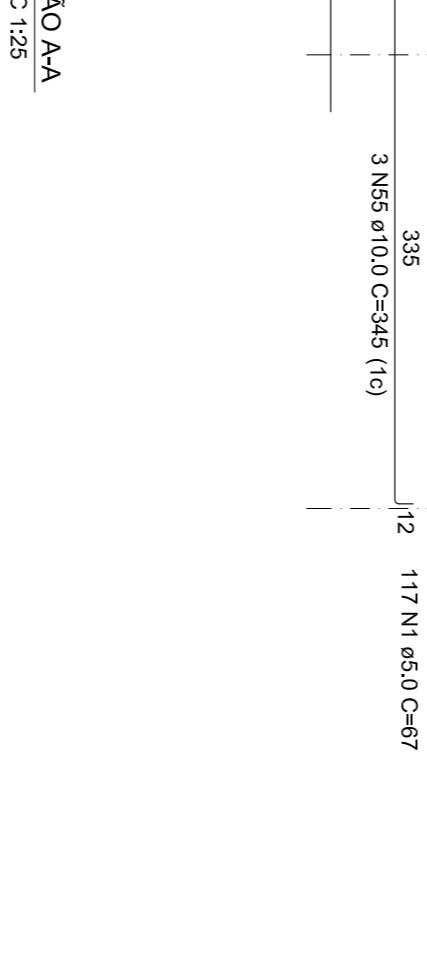
VR3



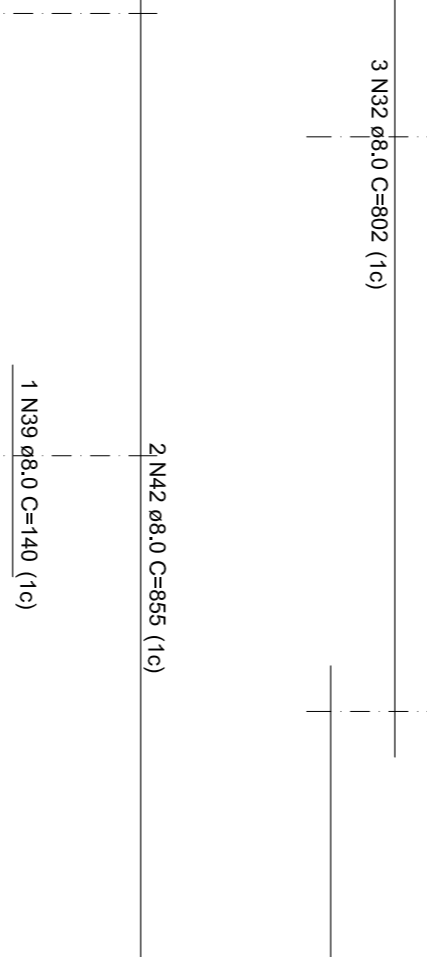
VR4



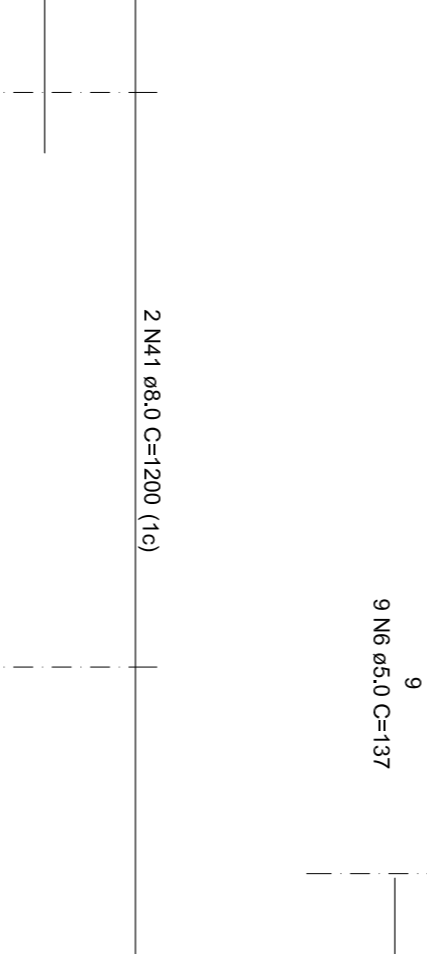
VS1



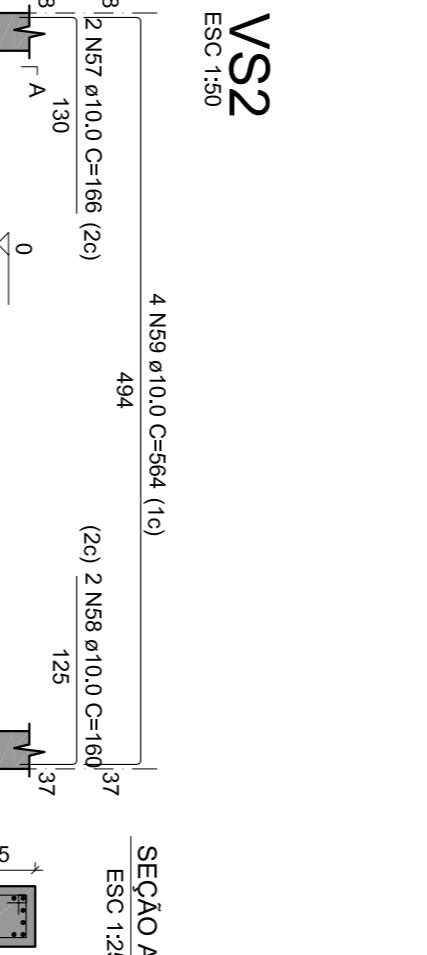
VS2



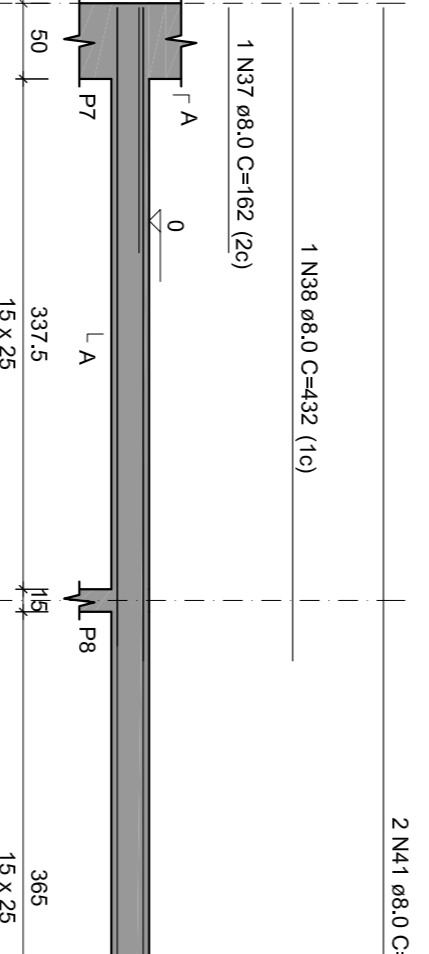
VS3



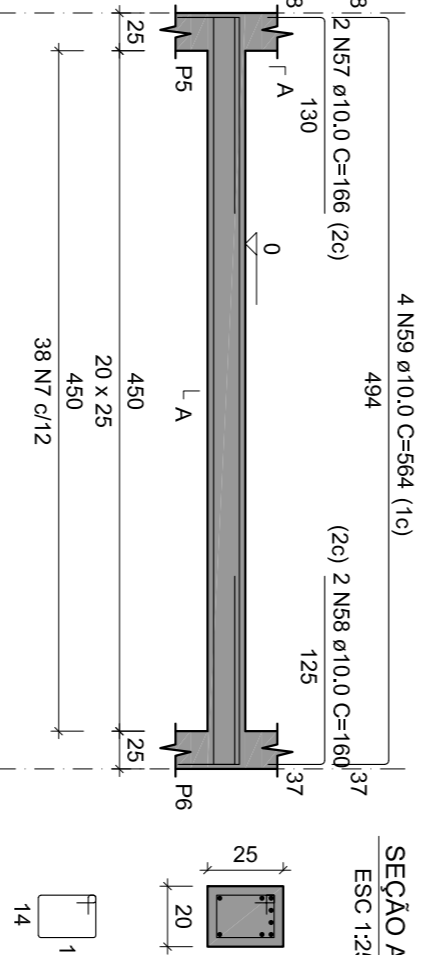
VS2



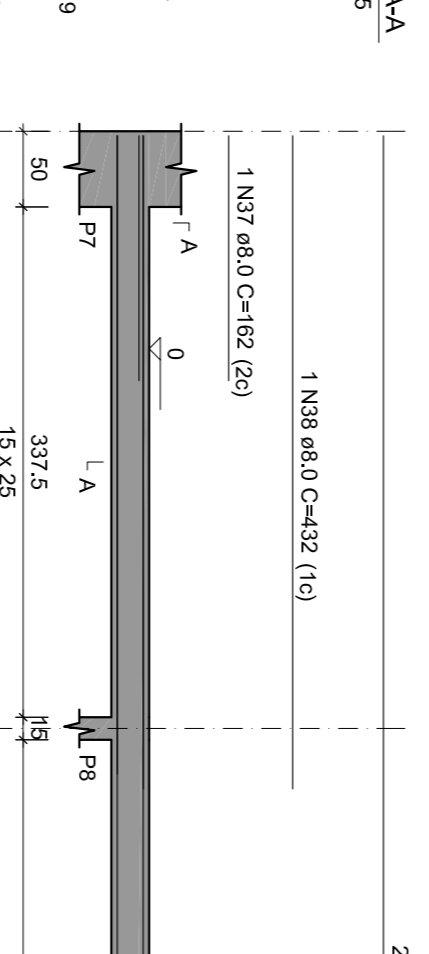
VS3



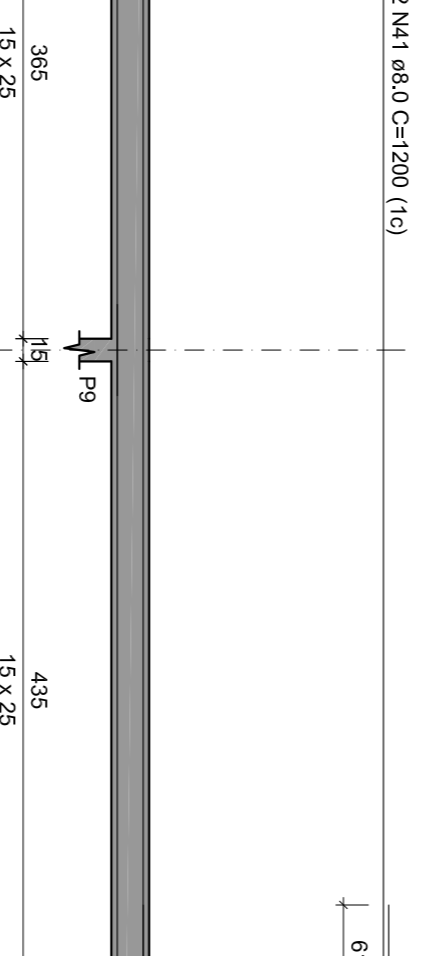
VS4



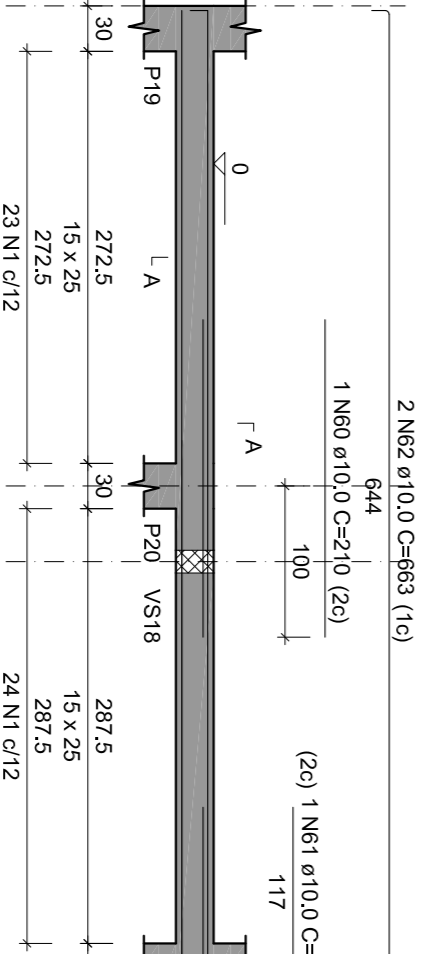
VS5



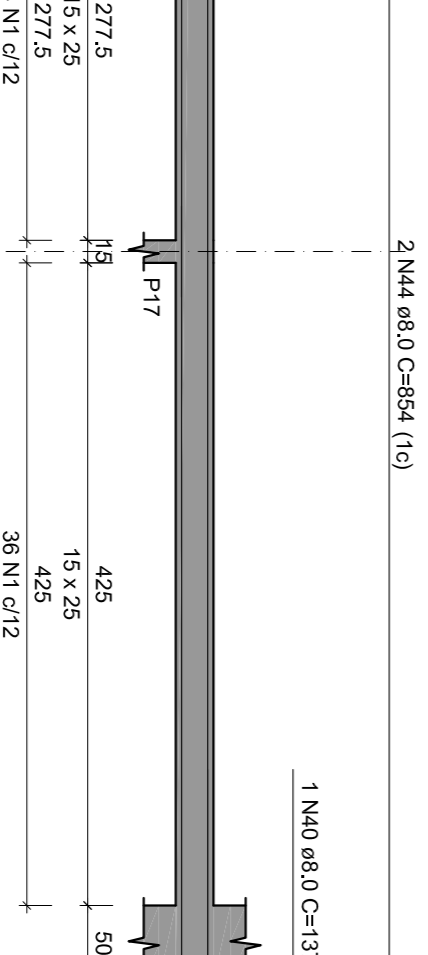
VS6



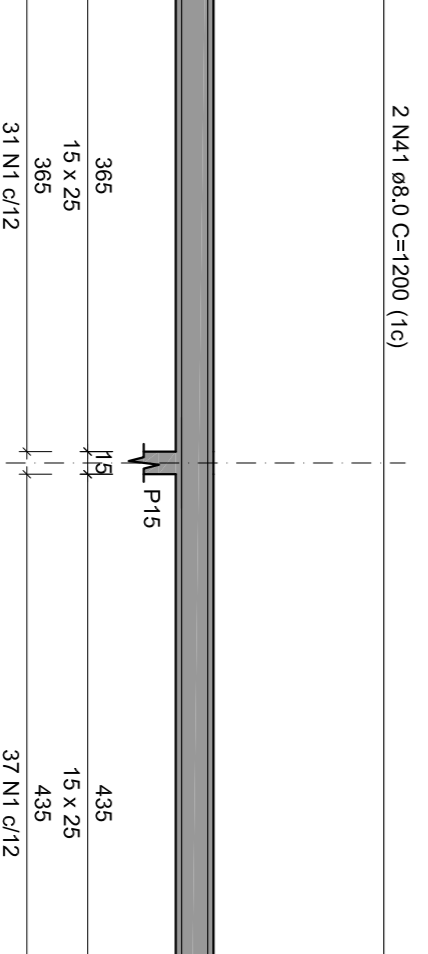
VS5



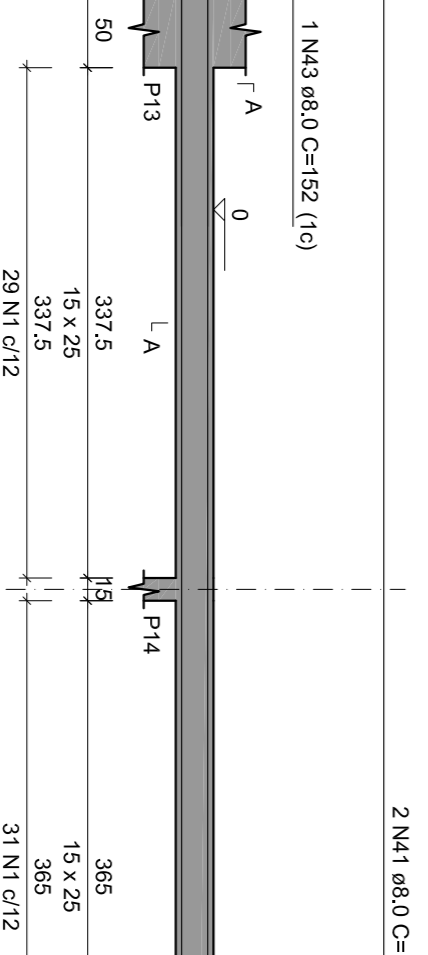
VS4



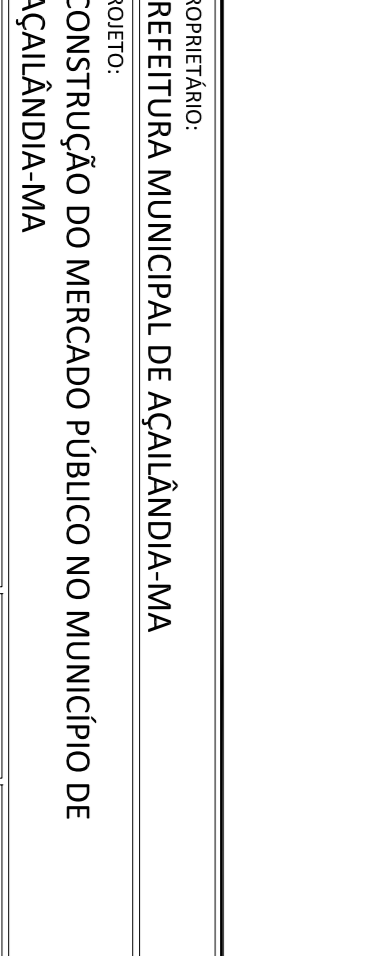
VS3



VS4



VS6



VS5



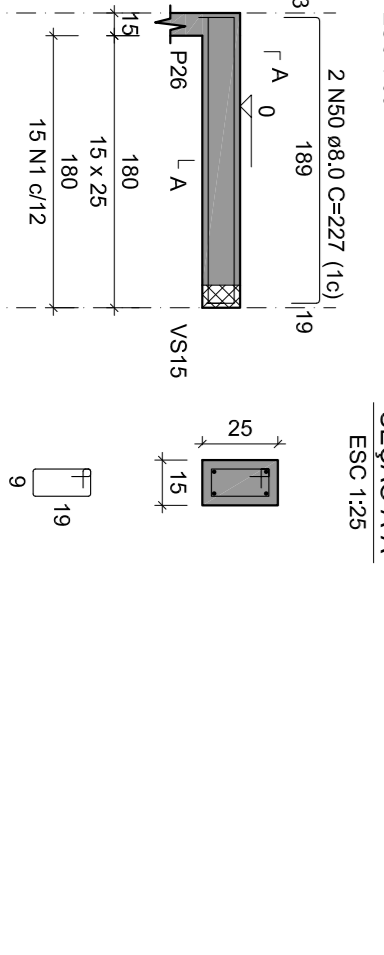
VS4



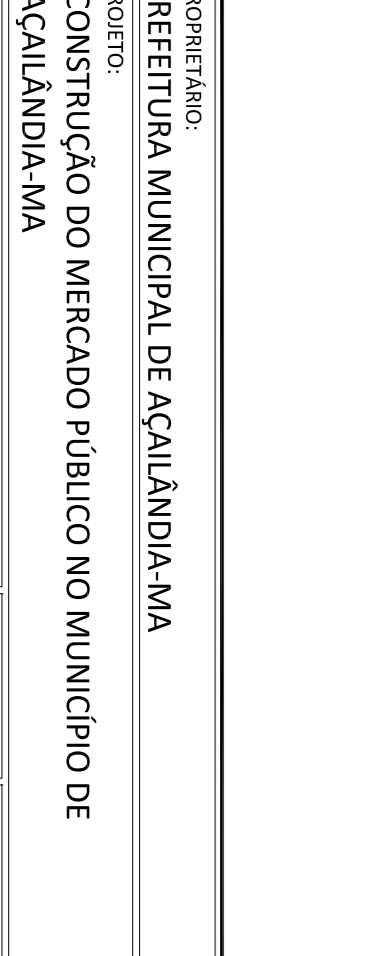
VS3



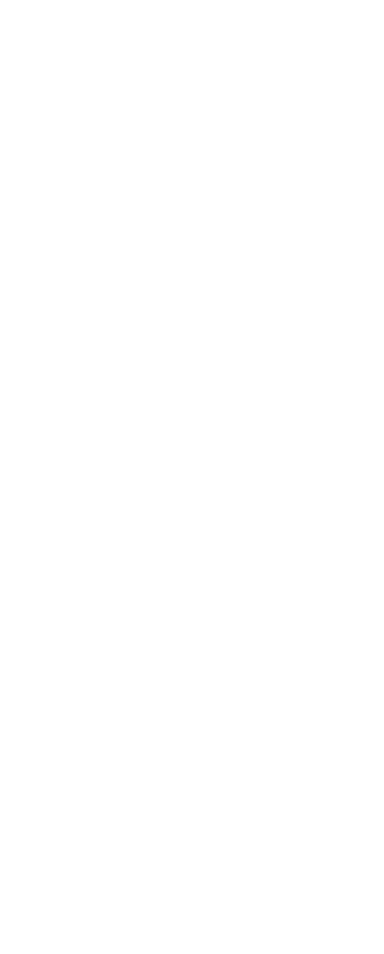
VS4



VS7



VS6



VS5



VS4



VS4

